

CONSTRUCTION NOTES:

- 1 INSTALL "CASE A" CURB RAMP PER CALTRANS STD PLAN A88A
- 2 INSTALL "CASE F" CURB RAMP PER CALTRANS STD PLAN A88A
- 3 INSTALL 12" WHITE CROSSWALK STRIPE
- 4 INSTALL "CASE C" CURB RAMP PER CALTRANS STD PLAN A88A
- 5 INSTALL CURB & GUTTER PER CITY STD PLAN RW-6.1
- 6 INSTALL DRIVEWAY PER CITY STD PLAN RW-8.1 & RW-8.2
- 7 INSTALL DETAIL 23 TRAFFIC LINE PER CALTRANS STD PLAN A20A
- 8 INSTALL DETAIL 27B EDGELINE PER CALTRANS STD PLAN A20B

- 9 INSTALL "STOP" MARKING
- 10 INSTALL "NARROW TUNNEL" SIGN WITH SOLAR POWERED FLASHING BEACONS
- 11 INSTALL 12" WHITE STOP BAR
- 12 INSTALL "TYPE A" DRAIN INLET PER CITY STD PLAN D-4.1, D-4.2, & D-4.3
- 13 REMOVE FENCE TO NEAREST POST FOR SIDEWALK
- 14 INSTALL 15" STORM DRAIN PIPE WITH ROCK RIP-RAP

LEGEND:

- CONCRETE SIDEWALK (4" CONC OVER 4" AB)
- AC WIDENING (8" FULL DEPTH AC)
- LED PEDESTRIAN LIGHT
- APPROXIMATE RIGHT OF WAY

Call Two Working
Days Before You
Dig!



1-800-227-2600

EXHIBIT
NOVEMBER 21, 2019

WILLOW/PALM PEDESTRIAN
CORRIDOR TRANSIT CENTER
CONNECTOR PROJECT

NO.	DESCRIPTION	BY	DATE

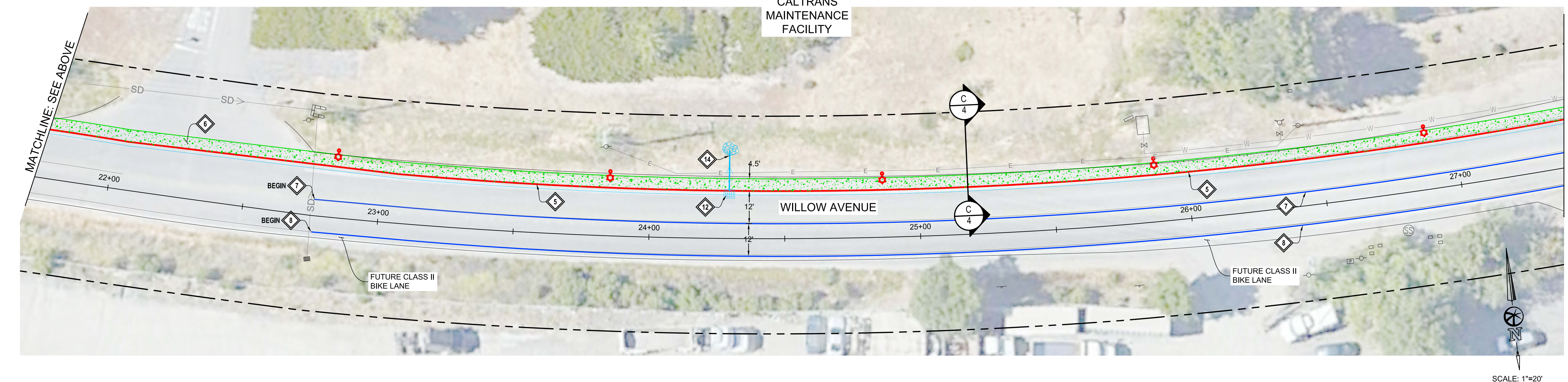
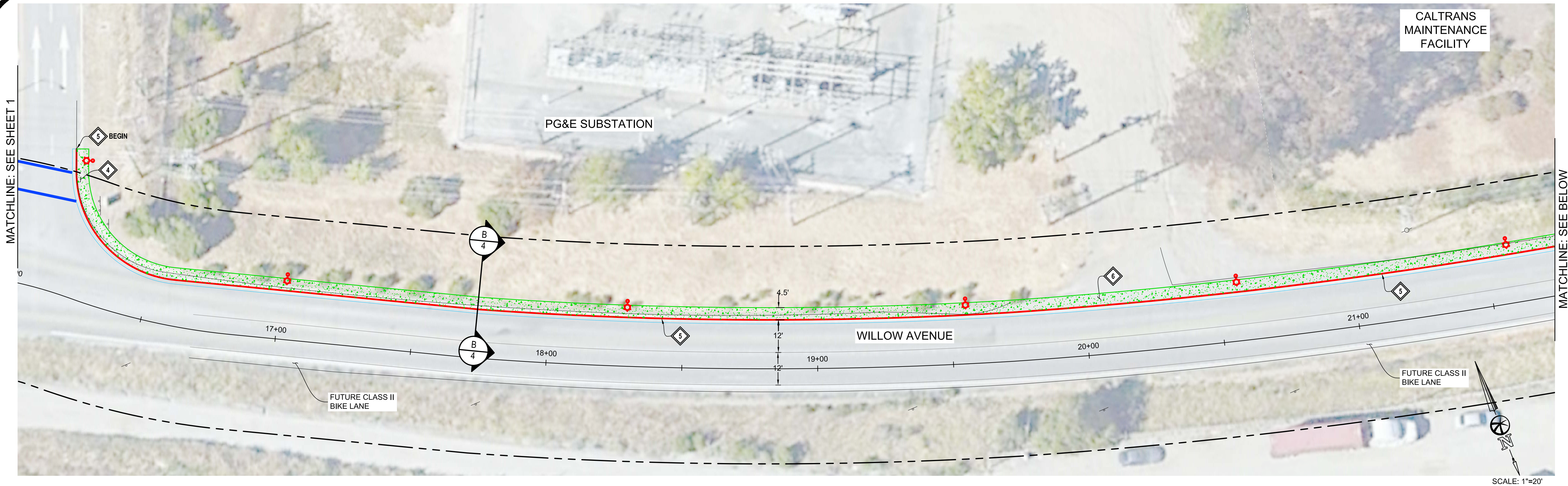
City of Hercules
Engineering Department
111 Civic Drive
Hercules, CA 94547
Tel: (510) 799-8244, Fax: (510) 799-8249
www.ci.hercules.ca.us

Bellecci & Associates, inc.
Civil Engineering • Land Surveying
2280 Diamond Boulevard, Suite 100 • Concord, CA 94520
Phone (925) 962-4265 Fax (925) 962-4266



WILLOW
AVENUE
&
PALM
AVENUE

Scale: As Shown
Design By: MA
Drawn By: JB
Checked By: RB
Sheet Number
1
1 of 4 Sheets



CONSTRUCTION NOTES:

- | | | | |
|---|---|----|--|
| 1 | INSTALL "CASE A" CURB RAMP PER CALTRANS STD PLAN A88A | 9 | INSTALL "STOP" MARKING |
| 2 | INSTALL "CASE F" CURB RAMP PER CALTRANS STD PLAN A88A | 10 | INSTALL "NARROW TUNNEL" SIGN WITH SOLAR POWERED FLASHING BEACONS |
| 3 | INSTALL 12" WHITE CROSSWALK STRIPE | 11 | INSTALL 12" WHITE STOP BAR |
| 4 | INSTALL "CASE C" CURB RAMP PER CALTRANS STD PLAN A88A | 12 | INSTALL "TYPE A" DRAIN INLET PER CITY STD PLAN D-4.1, D-4.2, & D-4.3 |
| 5 | INSTALL CURB & GUTTER PER CITY STD PLAN RW-6.1 | 13 | REMOVE FENCE TO NEAREST POST FOR SIDEWALK |
| 6 | INSTALL DRIVEWAY PER CITY STD PLAN RW-8.1 & RW-8.2 | 14 | INSTALL 15" STORM DRAIN PIPE WITH ROCK RIP-RAP |
| 7 | INSTALL DETAIL 23 TRAFFIC LINE PER CALTRANS STD PLAN A20A | | |
| 8 | INSTALL DETAIL 27B EDGELINE PER CALTRANS STD PLAN A20B | | |

LEGEND:

- | | |
|--|--|
| | CONCRETE SIDEWALK (4" CONC OVER 4" AB) |
| | AC WIDENING (8" FULL DEPTH AC) |
| | LED PEDESTRIAN LIGHT |
| | APPROXIMATE RIGHT OF WAY |

Call Two Working
Days Before You
Dig!



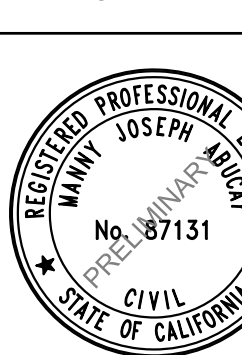
1-800-227-2600

**WILLOW/PALM PEDESTRIAN
CORRIDOR TRANSIT CENTER
CONNECTOR PROJECT**

NO.	DESCRIPTION	BY	DATE

City of Hercules
Engineering Department
111 Civic Drive
Hercules, CA 94547
Tel: (510) 799-8244, Fax: (510) 799-8249
www.ci.hercules.ca.us

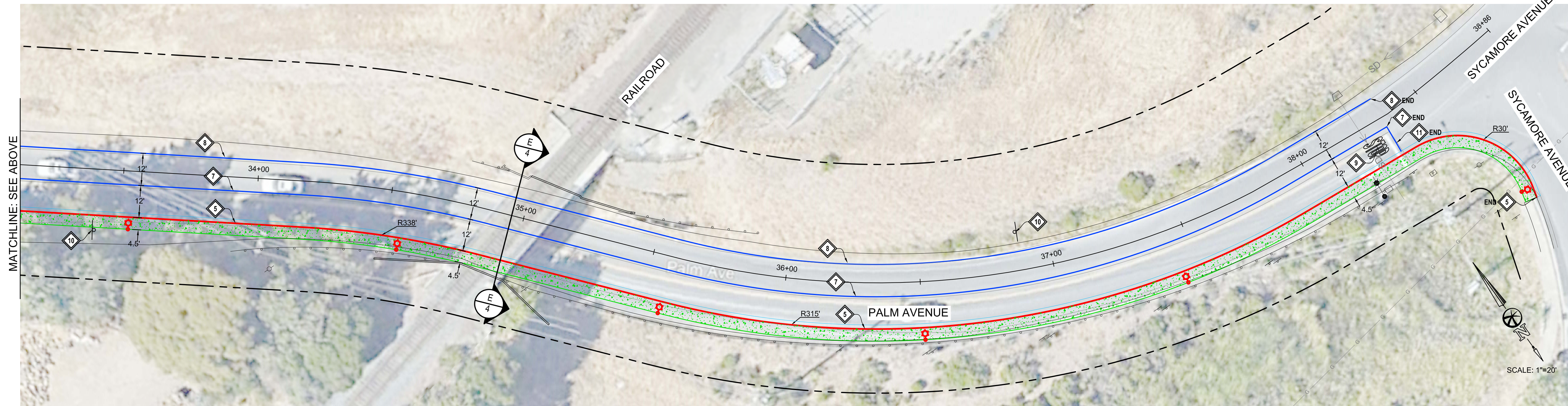
Bellecci & Associates, inc.



**WILLOW
AVENUE
&
PALM
AVENUE**

Scale: As Shown
Design By: MA
Drawn By: JB
Checked By: RB
Sheet Number
2
2 of 4 Sheets

**EXHIBIT
NOVEMBER 21, 2019**



CONSTRUCTION NOTES:

- | | | | |
|---|---|----|--|
| 1 | INSTALL "CASE A" CURB RAMP PER CALTRANS STD PLAN A88A | 8 | INSTALL DETAIL 27B EDGELINE PER CALTRANS STD PLAN A20B |
| 2 | INSTALL "CASE F" CURB RAMP PER CALTRANS STD PLAN A88A | 9 | INSTALL "STOP" MARKING |
| 3 | INSTALL 12" WHITE CROSSWALK STRIPE | 10 | INSTALL "NARROW TUNNEL" SIGN WITH SOLAR POWERED FLASHING BEACONS |
| 4 | INSTALL "CASE C" CURB RAMP PER CALTRANS STD PLAN A88A | 11 | INSTALL 12" WHITE STOP BAR |
| 5 | INSTALL CURB & GUTTER PER CITY STD PLAN RW-6.1 | 12 | INSTALL "TYPE A" DRAIN INLET PER CITY STD PLAN D-4.1, D-4.2, & D-4.3 |
| 6 | INSTALL DRIVEWAY PER CITY STD PLAN RW-8.1 & RW-8.2 | 13 | REMOVE FENCE TO NEAREST POST FOR SIDEWALK |
| 7 | INSTALL DETAIL 23 TRAFFIC LINE PER CALTRANS STD PLAN A20A | 14 | INSTALL 15" STORM DRAIN PIPE WITH ROCK RIP-RAP |

LEGEND:

- | | |
|--|--|
| | CONCRETE SIDEWALK (4" CONC OVER 4" AB) |
| | AC WIDENING (8" FULL DEPTH AC) |
| | LED PEDESTRIAN LIGHT |
| | APPROXIMATE RIGHT OF WAY |

Call Two Working
Days Before You
Dig!



1-800-227-2600

WILLOW/PALM PEDESTRIAN CORRIDOR TRANSIT CENTER CONNECTOR PROJECT

NO.	DESCRIPTION	BY	DATE

City of Hercules
Engineering Department
111 Civic Drive
Hercules, CA 94547
Tel: (510) 799-8244, Fax: (510) 799-8249
www.ci.hercules.ca.us

Bellecci & Associates, inc.

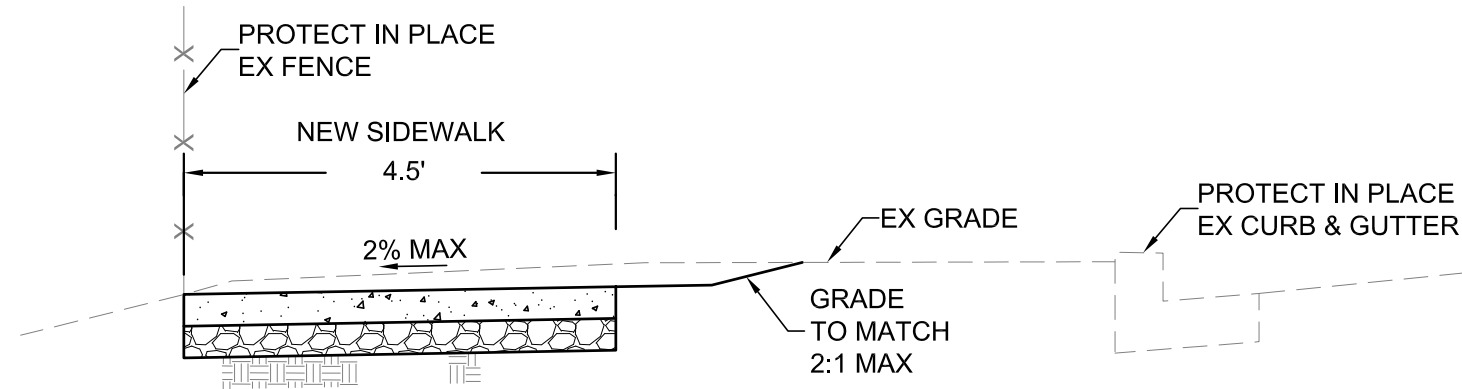
Civil Engineering • Land Surveying
2280 Diamond Boulevard, Suite 100 • Concord, CA 94520
Phone (925) 962-4466 Fax (925) 962-4466



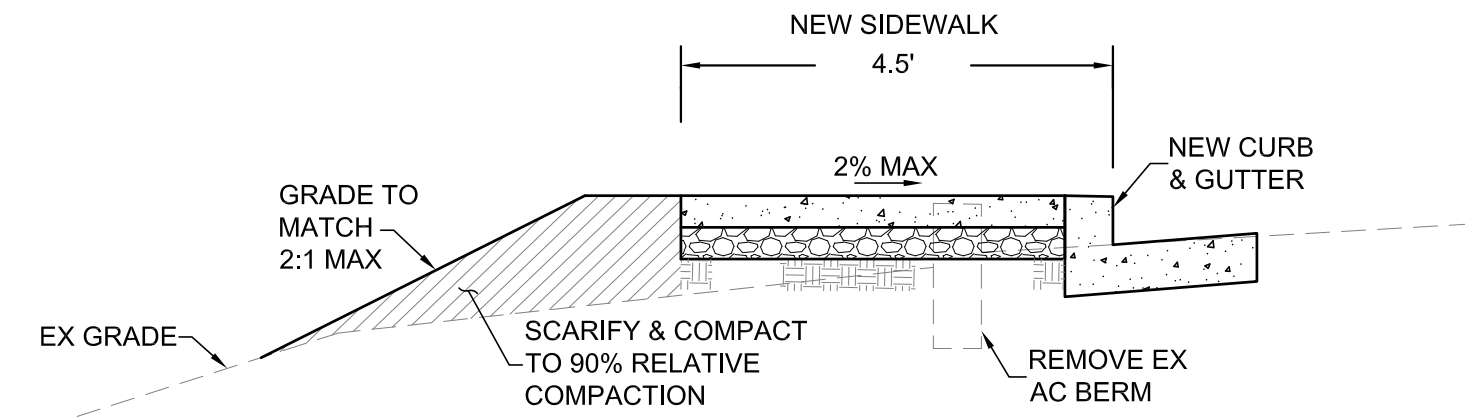
WILLOW AVENUE & PALM AVENUE

Scale: As Shown
Design By: MA
Drawn By: JB
Checked By: RB
Sheet Number
3
3 of 4 Sheets

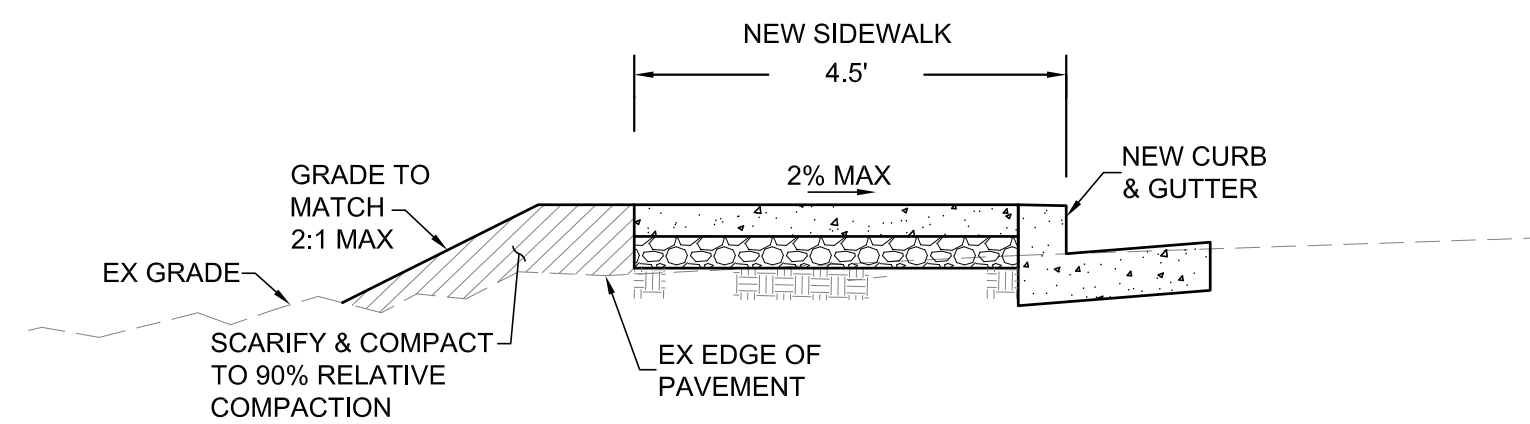
EXHIBIT
NOVEMBER 21, 2019



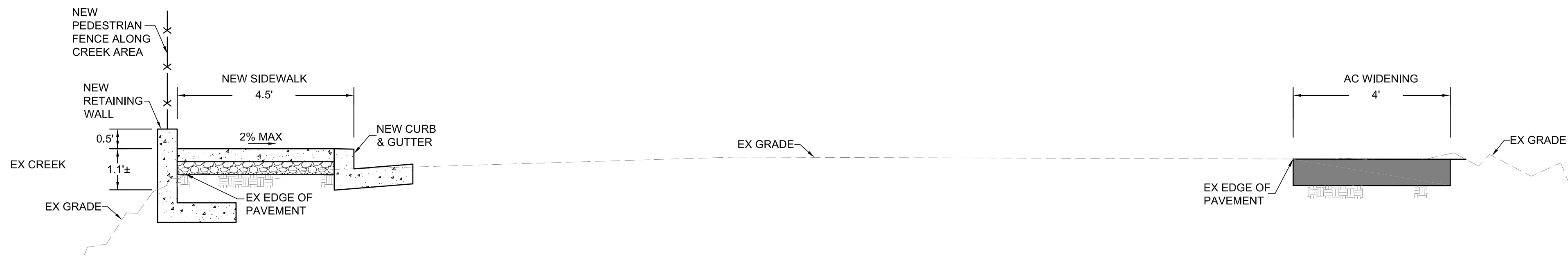
SECTION A-A
NTS



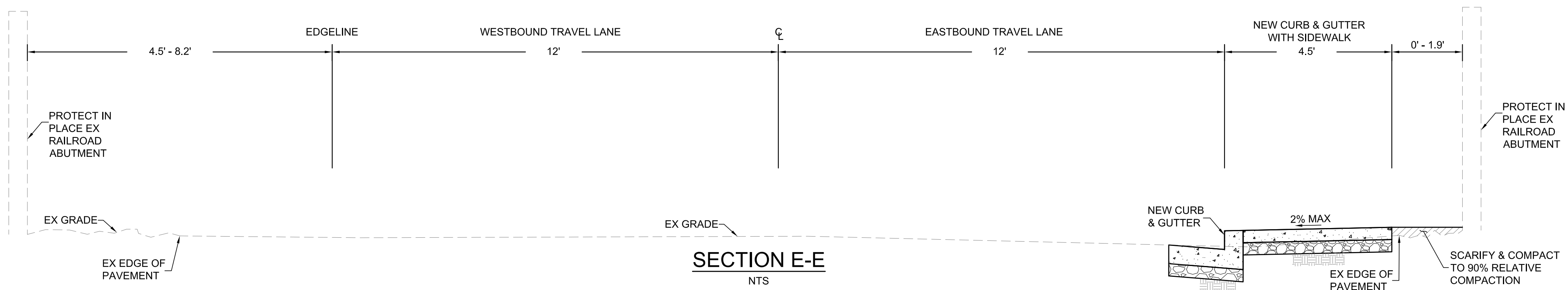
SECTION B-B
NTS



SECTION C-C
NTS



SECTION D-D
NTS



SECTION E-E
NTS

Call Two Working
Days Before You
Dig!



1-800-227-2600

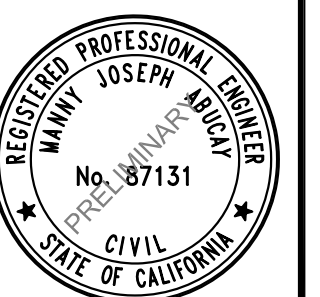
WILLOW/PALM PEDESTRIAN
CORRIDOR TRANSIT CENTER
CONNECTOR PROJECT

NO.	DESCRIPTION	BY	DATE

City of Hercules
Engineering Department
111 Civic Drive
Hercules, CA 94547
Tel: (510) 799-8244, Fax: (510) 799-8249
www.ci.hercules.ca.us

Bellecci & Associates, inc.
Civil Engineering • Land Surveying

2280 Diamond Boulevard, Suite 100 • Concord, CA 94520
Phone (925) 962-4466 Fax (925) 962-4436



WILLOW
AVENUE
&
PALM
AVENUE

Scale: As Shown
Design By: MA
Drawn By: JB
Checked By: RB
Sheet Number

4

4 of 4 Sheets

EXHIBIT
NOVEMBER 21, 2019