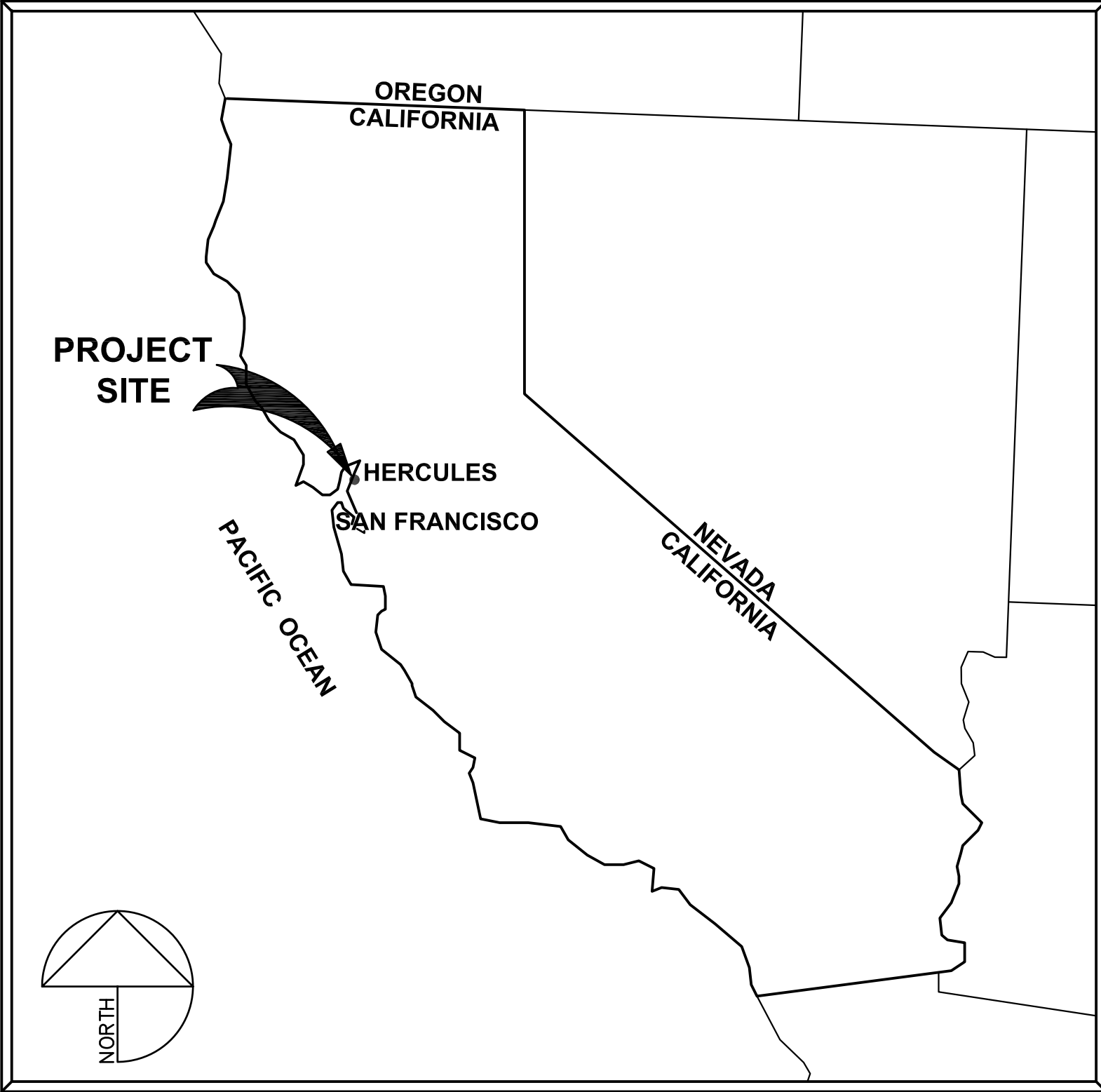


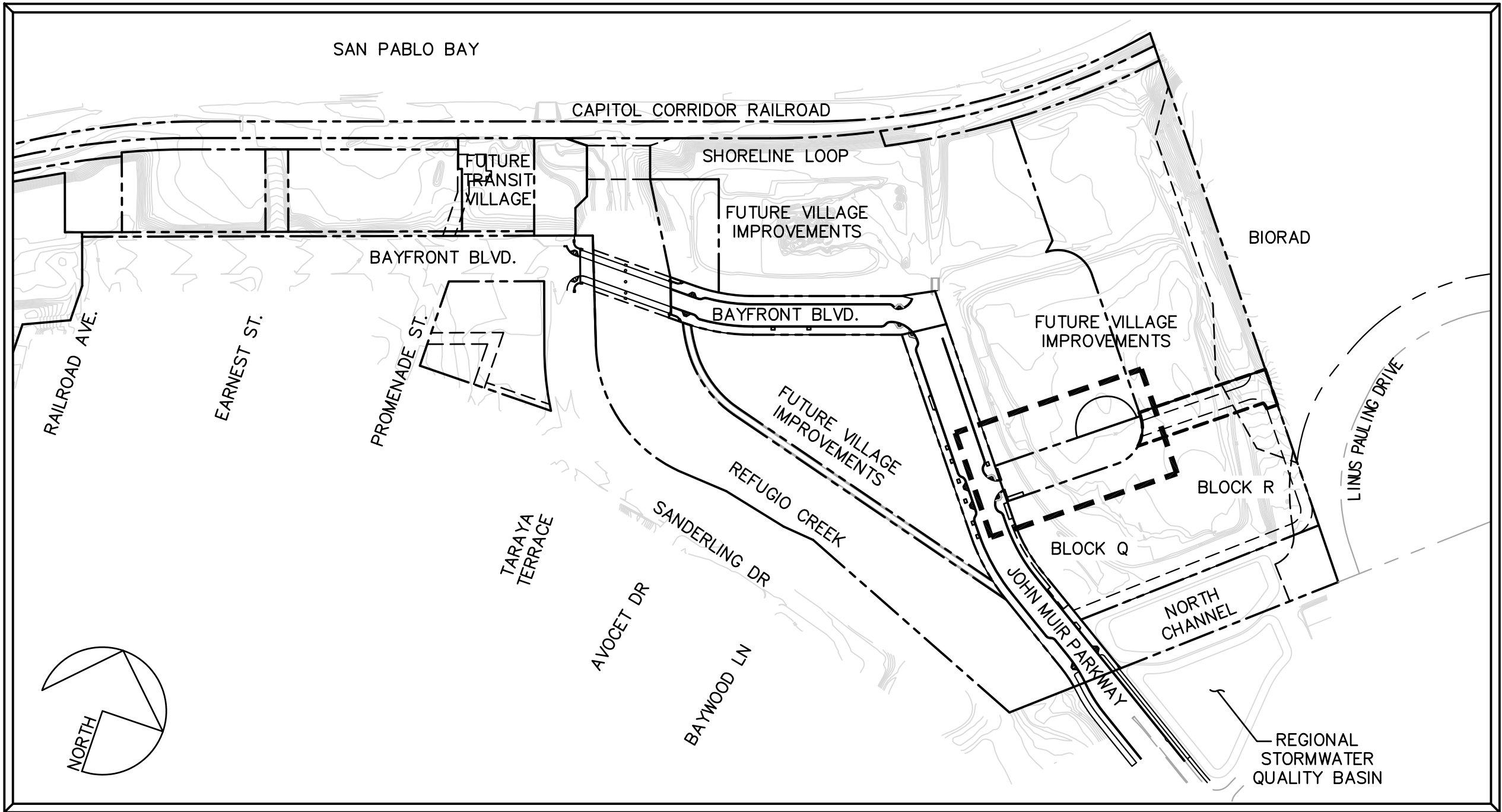
HERCULES BLOCK Q & R STREET IMPROVEMENT PACKAGE

BAYFRONT BOULEVARD & JOHN MUIR PARKWAY
HERCULES, CONTRA COSTA COUNTY, CALIFORNIA

PROJECT NUMBER: SIP-QR-005
OCTOBER 26, 2018
100% CONSTRUCTION DOCUMENTS



LOCATION MAP
NOT TO SCALE



VICINITY MAP
SCALE: 1" = 200'

EBMUD STANDARD PLANS

- 9020-G8 DISTRIBUTION MAIN SERVICE CONNECTIONS, 3/4" THRU 2"
- 9498-G8 FIRE HYDRANT INSTALLATION

REFERENCED PLANS

BLOCK Q GRADING PERMIT PACKAGE
CONTRA COSTA COUNTY PERMIT NO. XX-XX-XXXX

BLOCK Q BUILDING PERMIT PACKAGE
CONTRA COSTA COUNTY PERMIT NO. XX-XX-XXXX

CITY STANDARD PLANS

- D-1 PRECAST MANHOLE TYPE 1 BASE
- D-3 MANHOLE COVER AND FRAME
- D-4.1,4.2,4.3 TYPE A INLET
- D-7.1,7.2,7.3 TYPE D INLET
- D-8.1,8.2 INLET FRAME AND GRATE
- D-9.2 CIRCULAR FRAME AND GRATE FRAME
- M 2.1 WOOD HEADER
- RW-1.1 STREET SECTION
- RW-5.1,5.2,5.3 TRENCH SECTIONS
- RW-6.1 CURB AND GUTTER
- RW-8.1,8.2 DRIVEWAY RAMP DETAILS
- RW-11.1,11.2 DOWELING DETAILS FOR CURB AND SIDEWALK
- RW-13.1 STREET NAME SIGN
- RW-15.1 UTILITY LOCATIONS
- RW-16.1,16.2,16.3 SIGNING AND STRIPING STANDARDS
- RW-18.1 CROSSWALK/STOP BAR INSTALLATION
- RW-22.1 FIRE HYDRANT MARKER

INDEX OF SHEETS

SHEET	PAGE	DESCRIPTION
C-10	1	TITLE SHEET
C-20	2	TYPICAL SECTIONS
C-30	3	EXISTING CONDITIONS AND DEMOLITION PLAN
C-40	4	LAYOUT PLAN AND IMPROVEMENT CALLOUTS
C-50	5	ENLARGED GRADING PLAN
C-51	6	CURB RETURN PROFILES
C-52	7	GRADING PLAN AND CENTERLINE PROFILE
C-60	8	UTILITY PLAN AND PROFILE
C-70	9	EROSION CONTROL PLAN
C-80	10	FIRE ACCESS PLAN
C-90	11	CONSTRUCTION DETAILS
INT1	12	JOINT TRENCH INTENT TITLE SHEET
INT2	13	JOINT TRENCH INTENT

REVIEWED FOR CONFORMANCE WITH THE CITY OF HERCULES STANDARDS AND SPECIFICATIONS. APPROVAL FOR CONSTRUCTION IS SUBJECT TO THE INFORMATION SHOWN HEREIN. CITY OF HERCULES AND THE UNDERSIGNED ARE NOT RESPONSIBLE FOR ANY ERRORS OR OMISSIONS THAT MAY EXIST ON THESE PLANS.

MIKE ROBERTS, P.E.
PUBLIC WORKS DIRECTOR/CITY ENGINEER

PROJECT TEAM

Parisi 1936 University Ave, Suite 250
CSW DESIGN GROUP Berkeley, CA 94704
510 343 6400
www.parisi-associates.com

Revisions

No.

1936 University Ave, Suite 250
Berkeley, CA 94704
510 343 6400
www.parisi-associates.com

Parisi
CSW DESIGN GROUP

HERCULES BLOCKS Q&R
STREET IMPROVEMENT PACKAGE

TITLE SHEET
CONTRA COSTA COUNTY
CALIFORNIA

HERCULES

Date: 10/26/2018

Scale:

Design: MV

Drawn: MV

Approved: MV

Job No: 18013

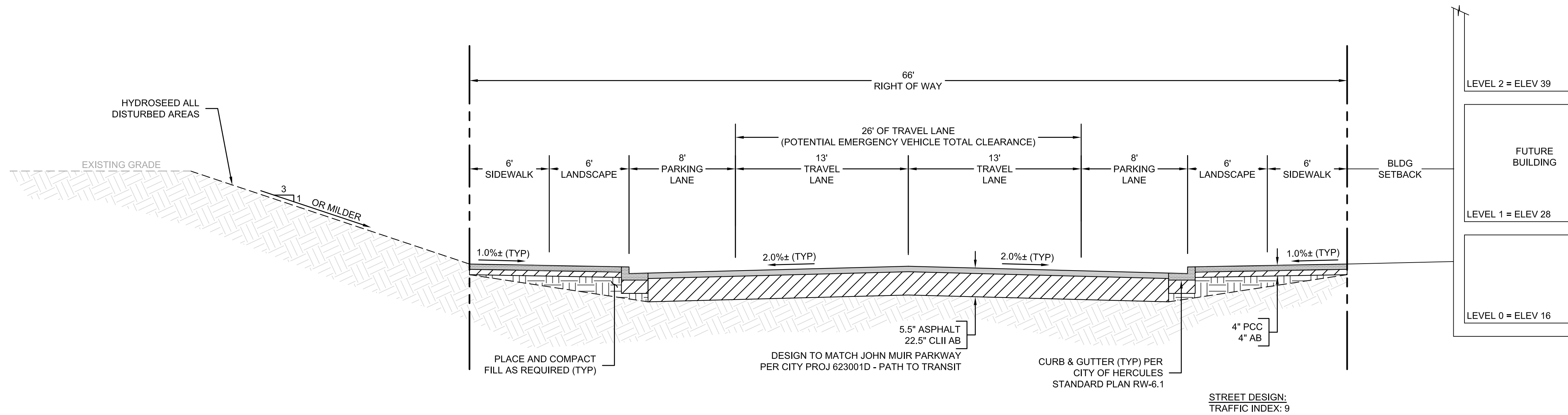
Drawing Number:

C-10

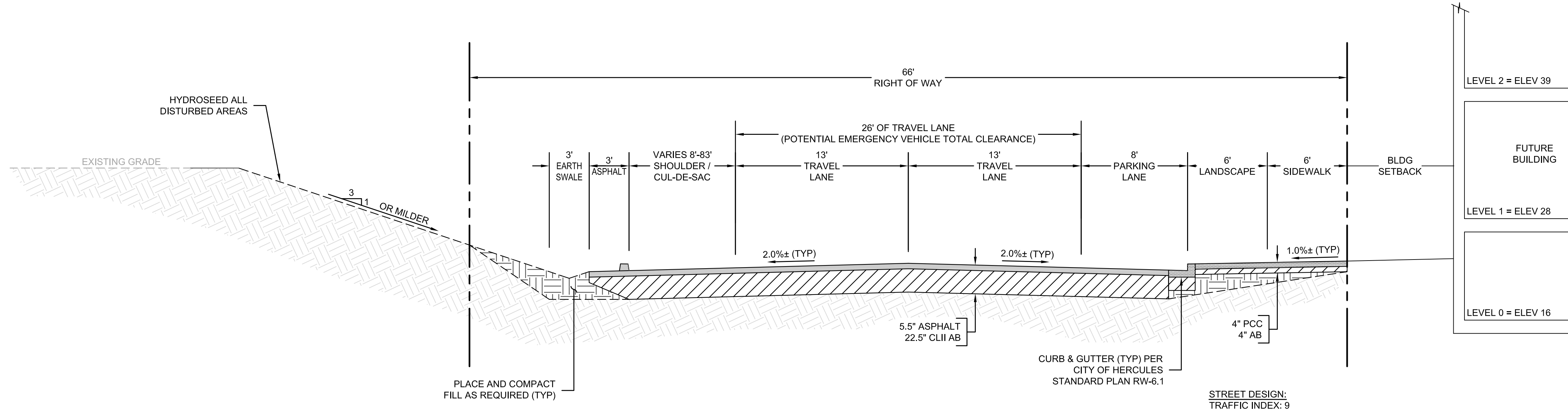
1 OF 13



DATE SIGNED: 10/26/2018



**SECTION A-A: LOOP 'A' ROAD
LOOKING EAST, SEE SHEET C-40
(SIDEWALK ON BOTH SIDES)
STA 1+40 TO 1+56**



**SECTION B-B: LOOP 'A' ROAD
LOOKING EAST, SEE SHEET C-40
(SIDEWALK ON SOUTH SIDE)
STA 1+56 TO 4+02**

Revisions

No.

1936 University Ave, Suite 250
Berkeley, CA 94704
510 343 6400
www.parisi-associates.com

Parisi
CSW DESIGN GROUP

**HERCULES BLOCKS Q&R
STREET IMPROVEMENT PACKAGE**

CALIFORNIA

TYPICAL SECTIONS
CONTRA COSTA COUNTY

HERCULES

Date: 10/26/2018

Scale:

Design: MV

Drawn: MV

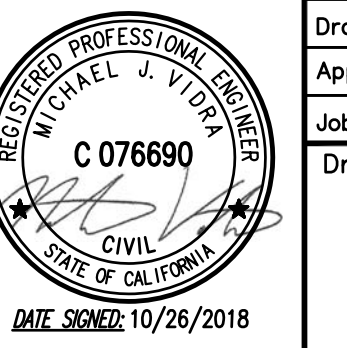
Approved: MV

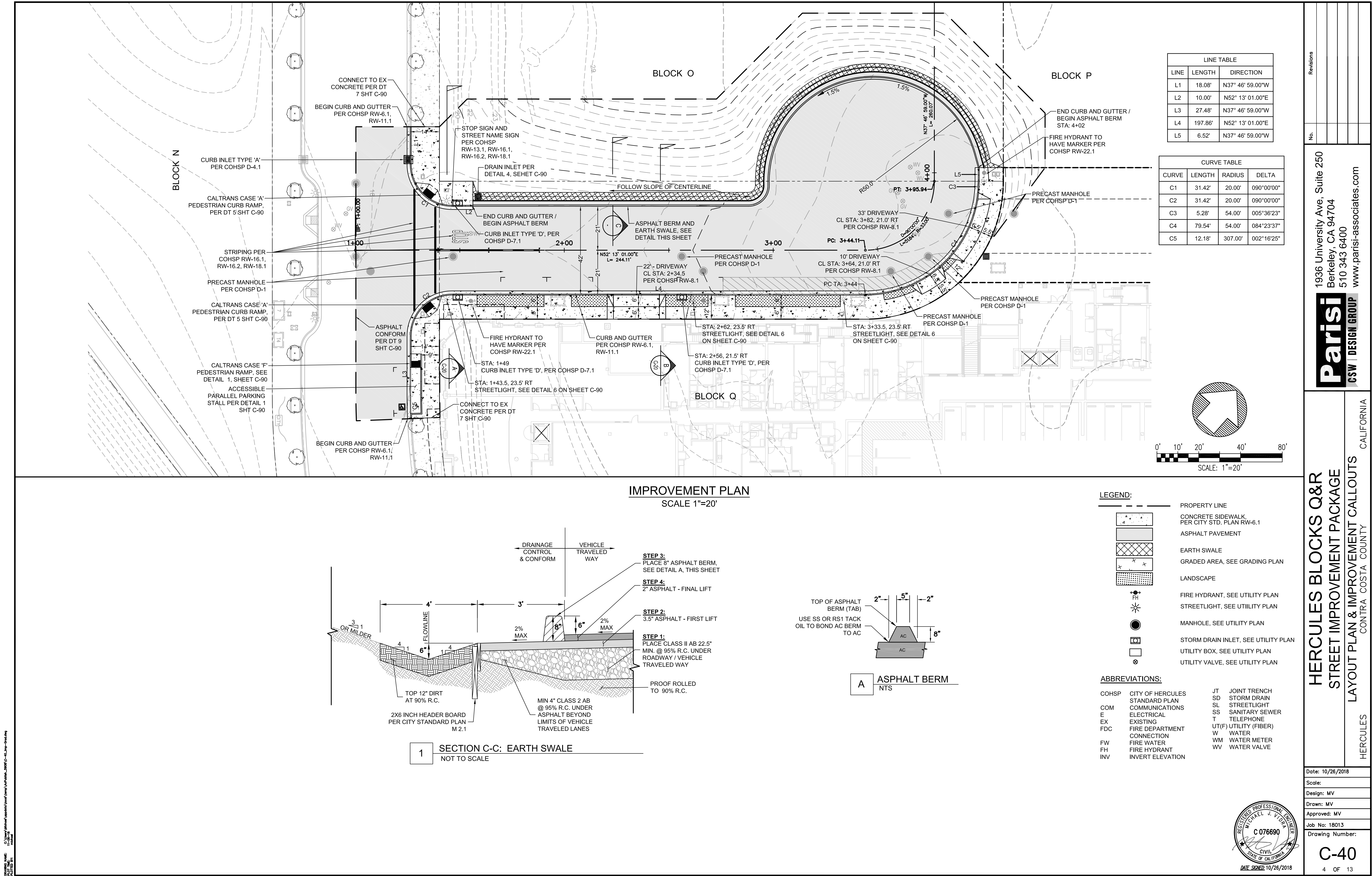
Job No: 18013

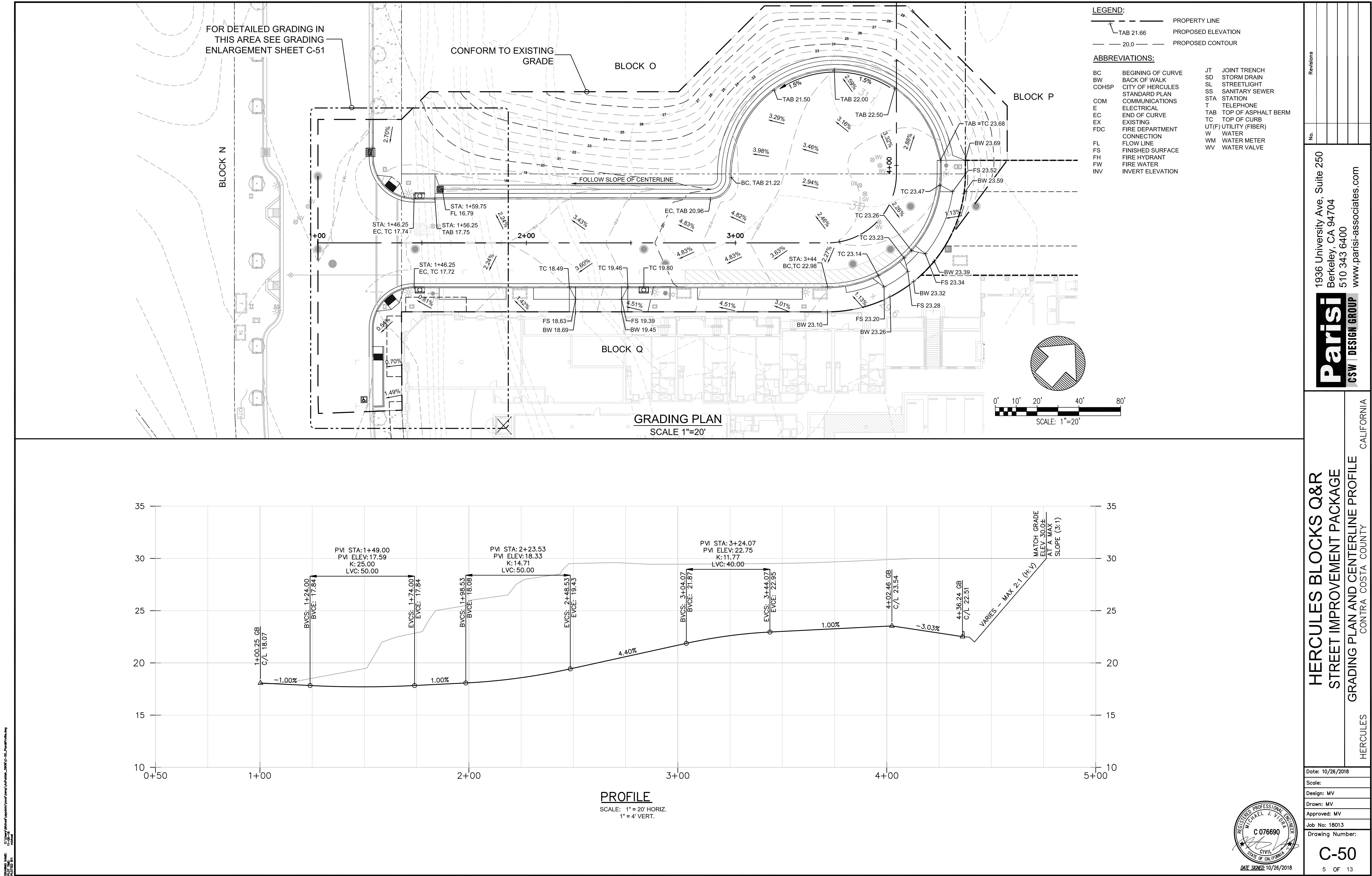
Drawing Number:

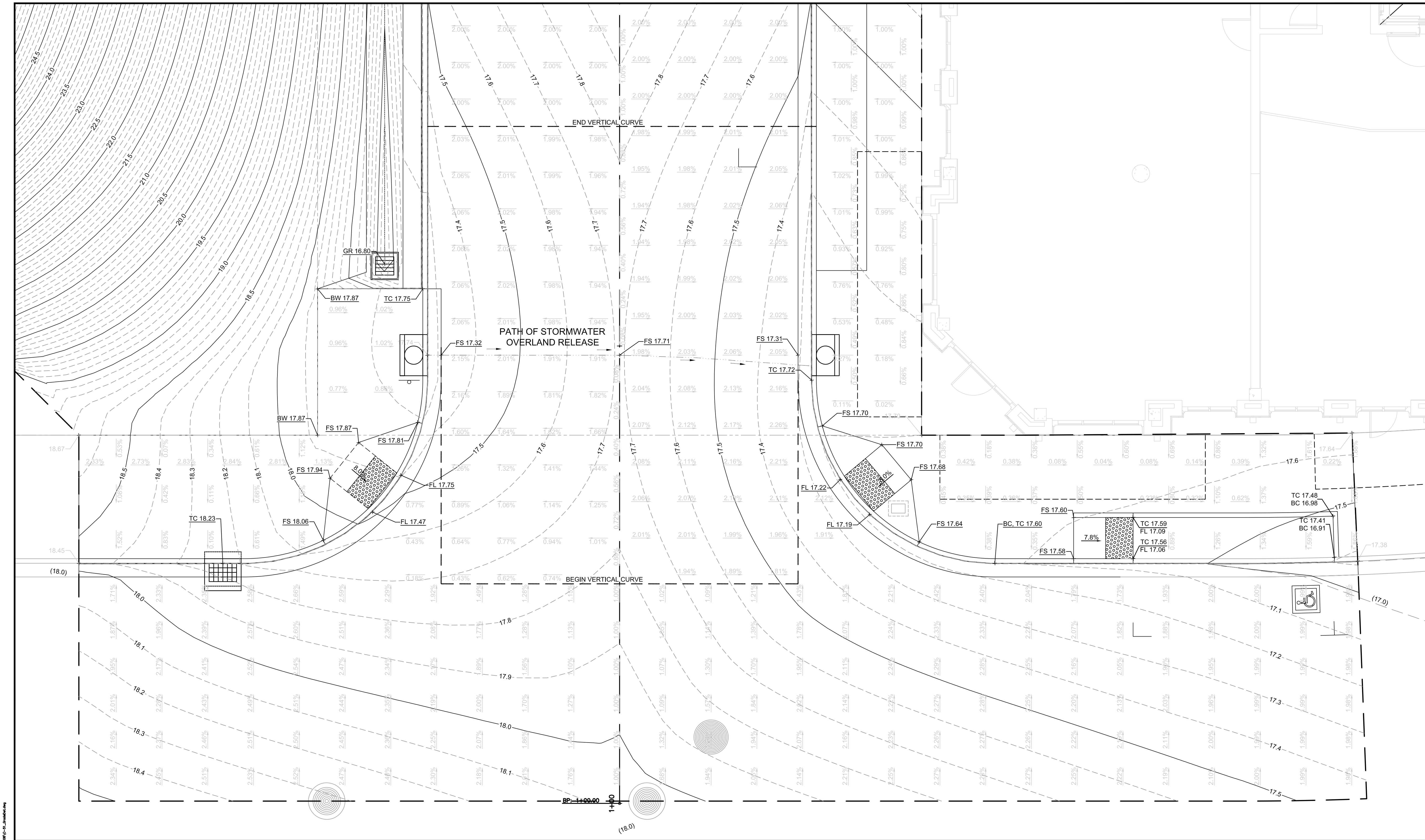
C-20

2 OF 13

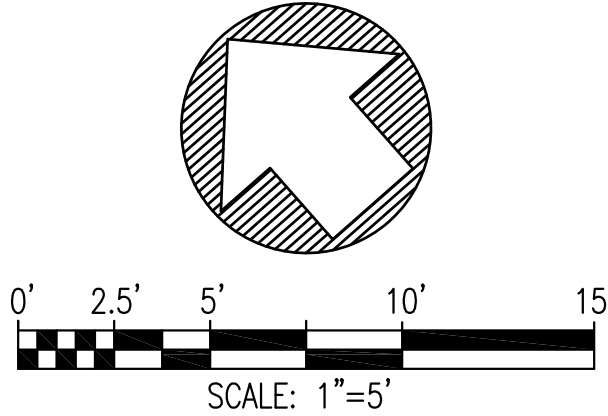








ENLARGED GRADING PLAN
SCALE 1"=5'



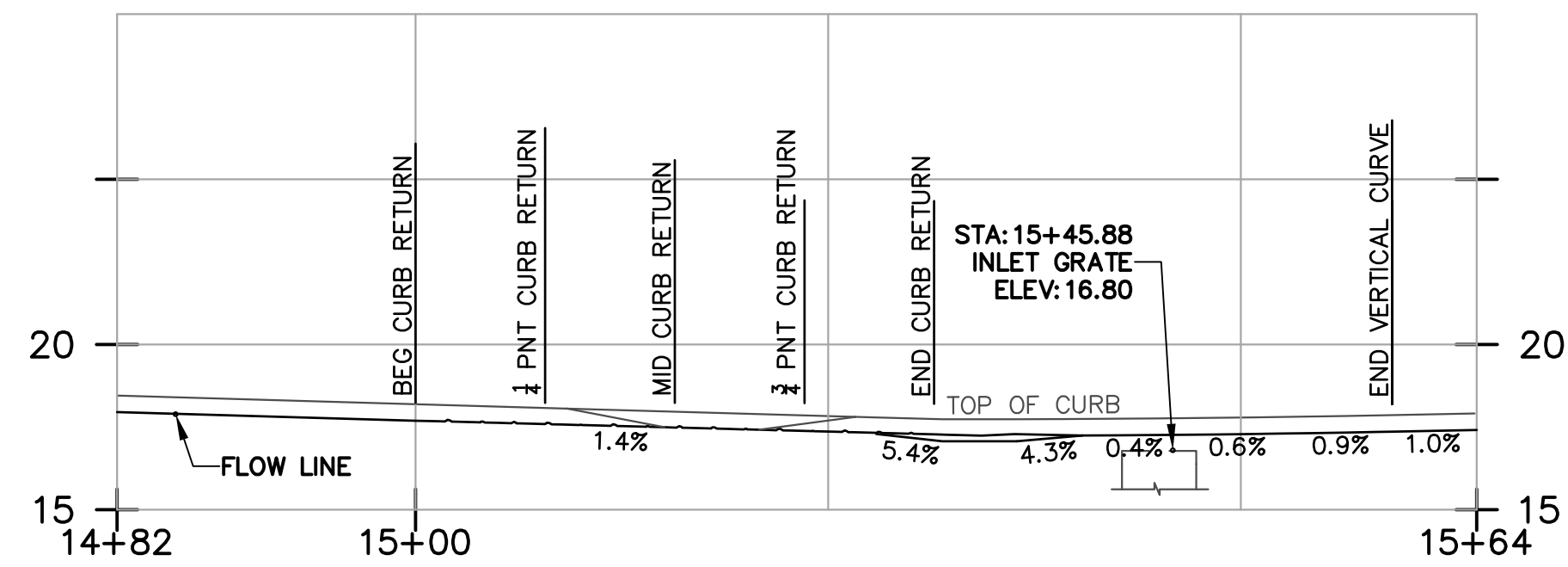
Date: 10/26/2018
Scale:
Design: MV
Drawn: MV
Approved: MV
Job No: 18013
Drawing Number:
C-51
6 OF 13

HERCULES BLOCKS Q&R
STREET IMPROVEMENT PACKAGE
ENLARGED GRADING PLAN
CONTRA COSTA COUNTY
HERCULES CALIFORNIA

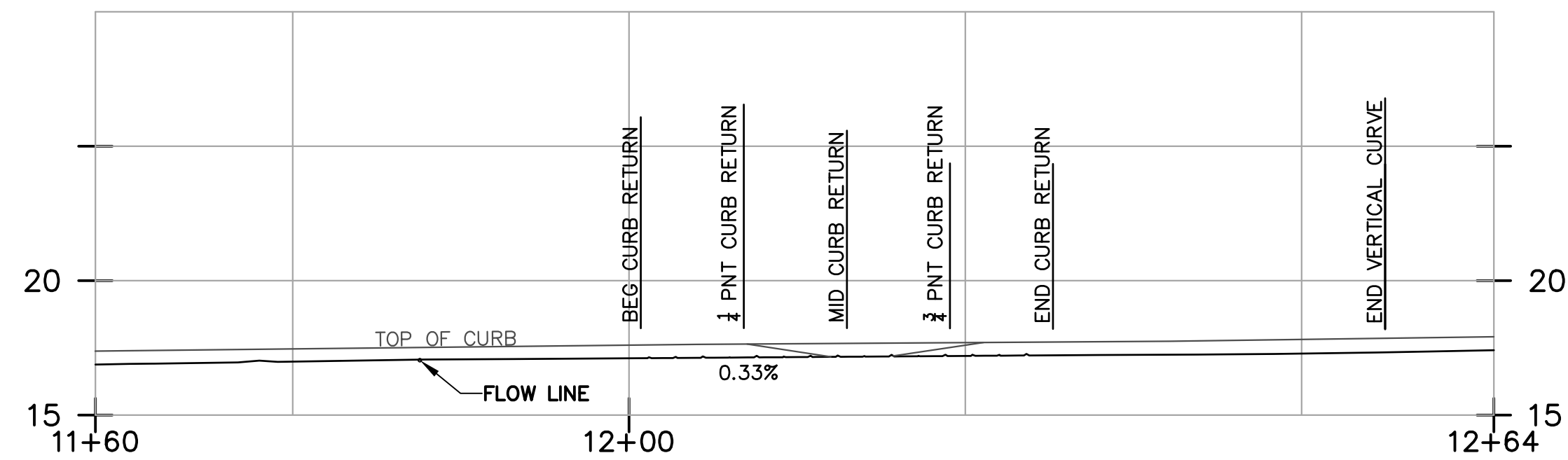
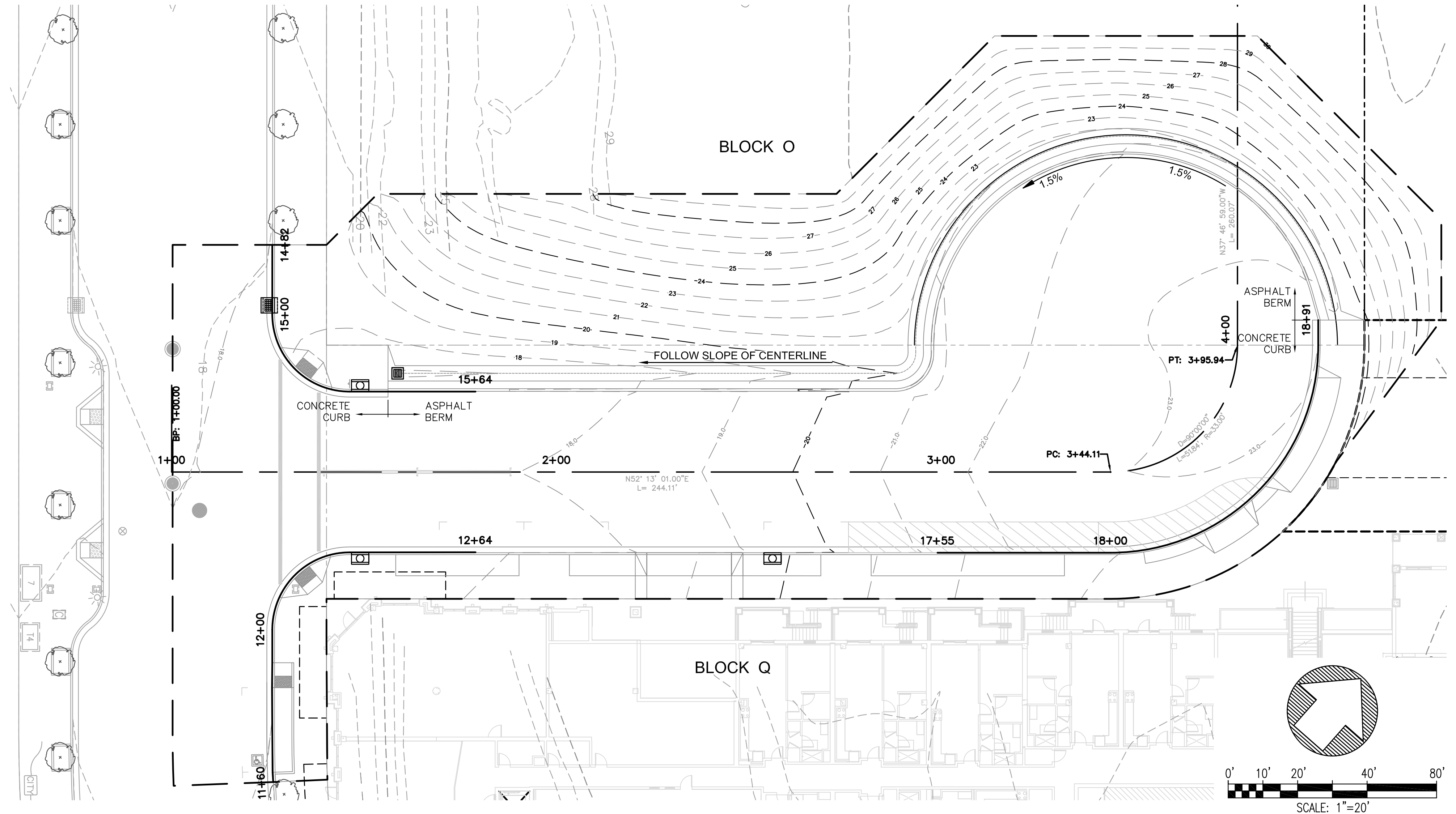
1936 University Ave, Suite 250
Berkeley, CA 94704
510 343 6400
www.parisi-associates.com

Parisi
CSW DESIGN GROUP

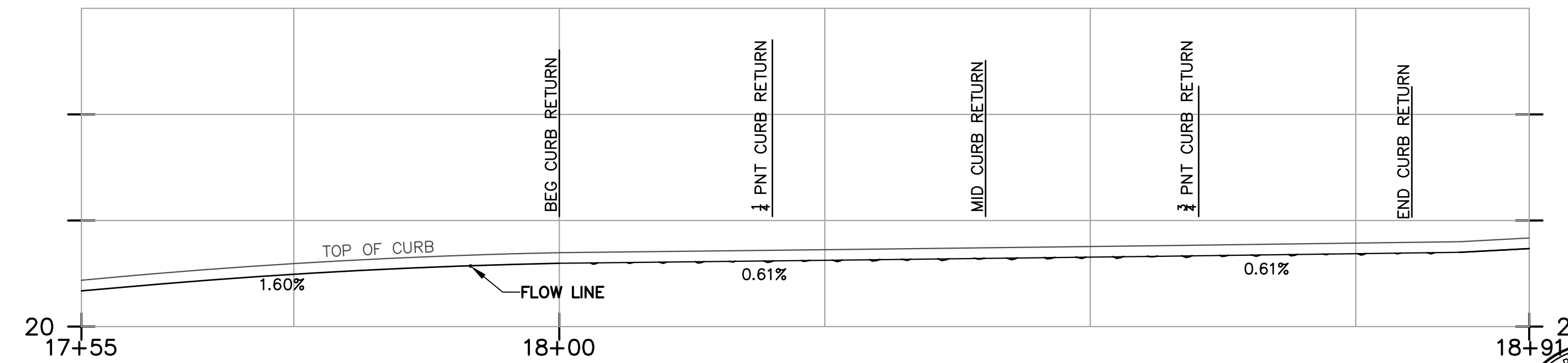
Revisions
No.



CURB RETURN PROFILE
JOHN MUIR PARKWAY NORTH
SCALE: HORIZ 1"=10'
VERT 1"=5'



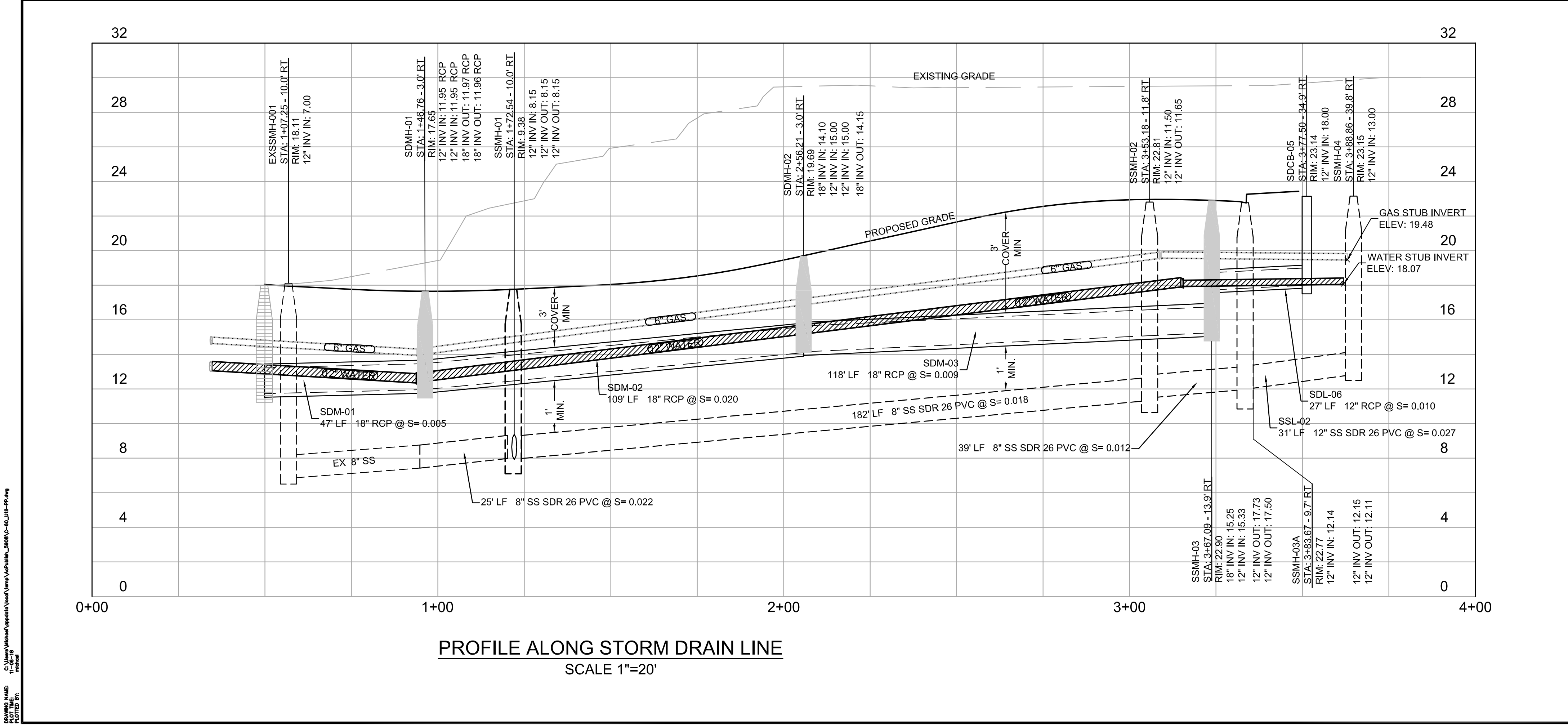
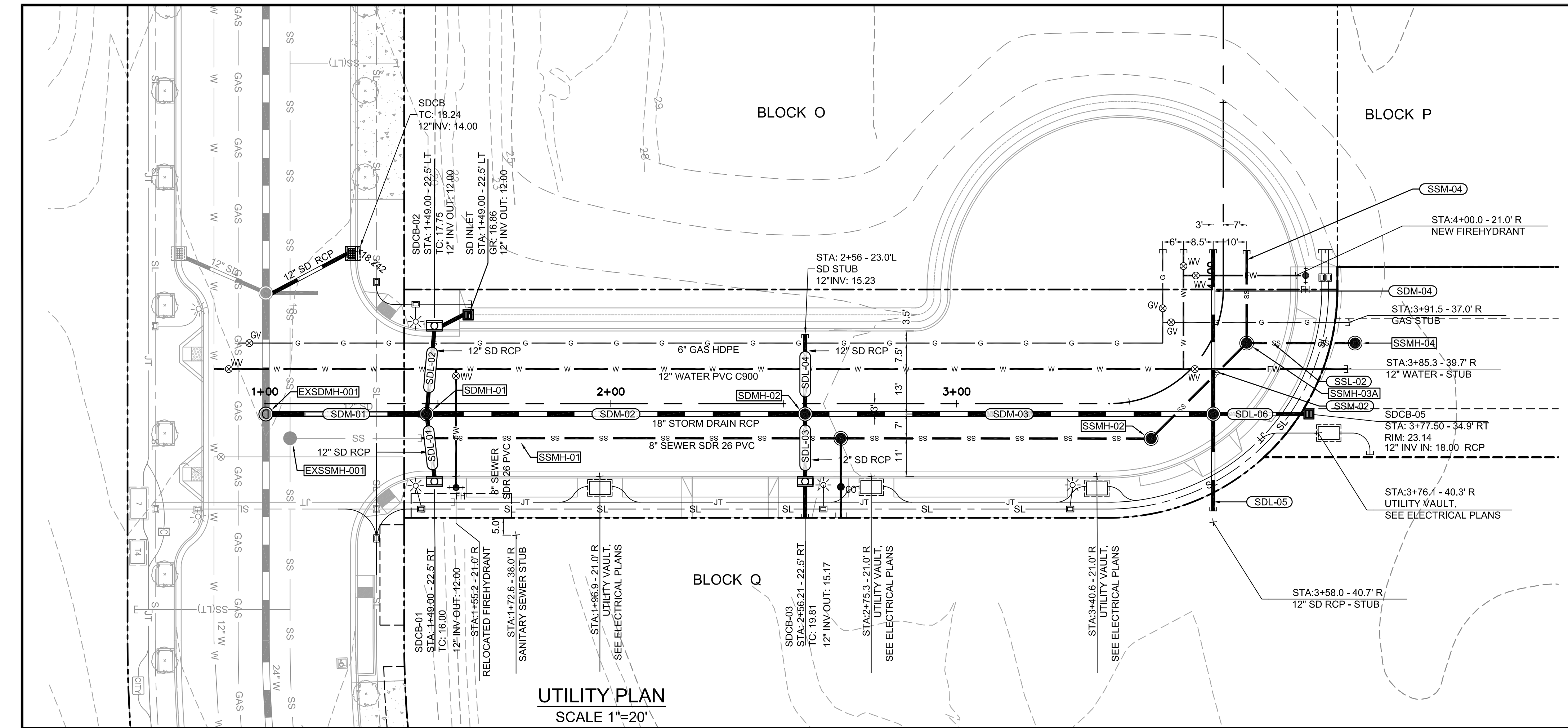
CURB RETURN PROFILE
JOHN MUIR PARKWAY SOUTH
SCALE: HORIZ 1"=10'
VERT 1"=5'



CURB RETURN PROFILE
CUL-DE-SAC SOUTH
SCALE: HORIZ 1"=10'
VERT 1"=5'



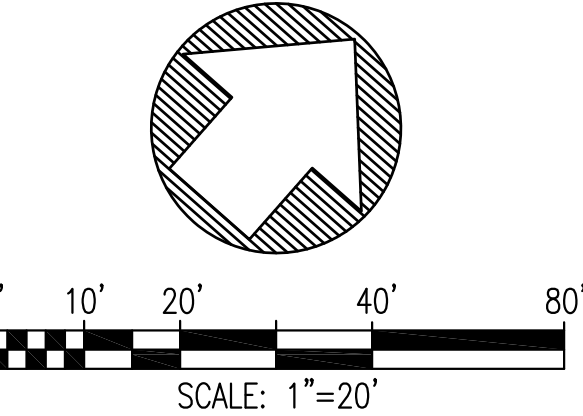
HERCULES BLOCKS Q&R STREET IMPROVEMENT PACKAGE		HERCULES	
CURB RETURN PROFILES CONTRA COSTA COUNTY		CALIFORNIA	
Date: 10/26/2018 Scale: Design: MV Drawn: MV Approved: MV Job No: 18013 Drawing Number:		Revisions No. 1936 University Ave, Suite 250 Berkeley, CA 94704 510 343 6400 www.parisi-associates.com Parisi CSW DESIGN GROUP	
C-52		7 OF 13	



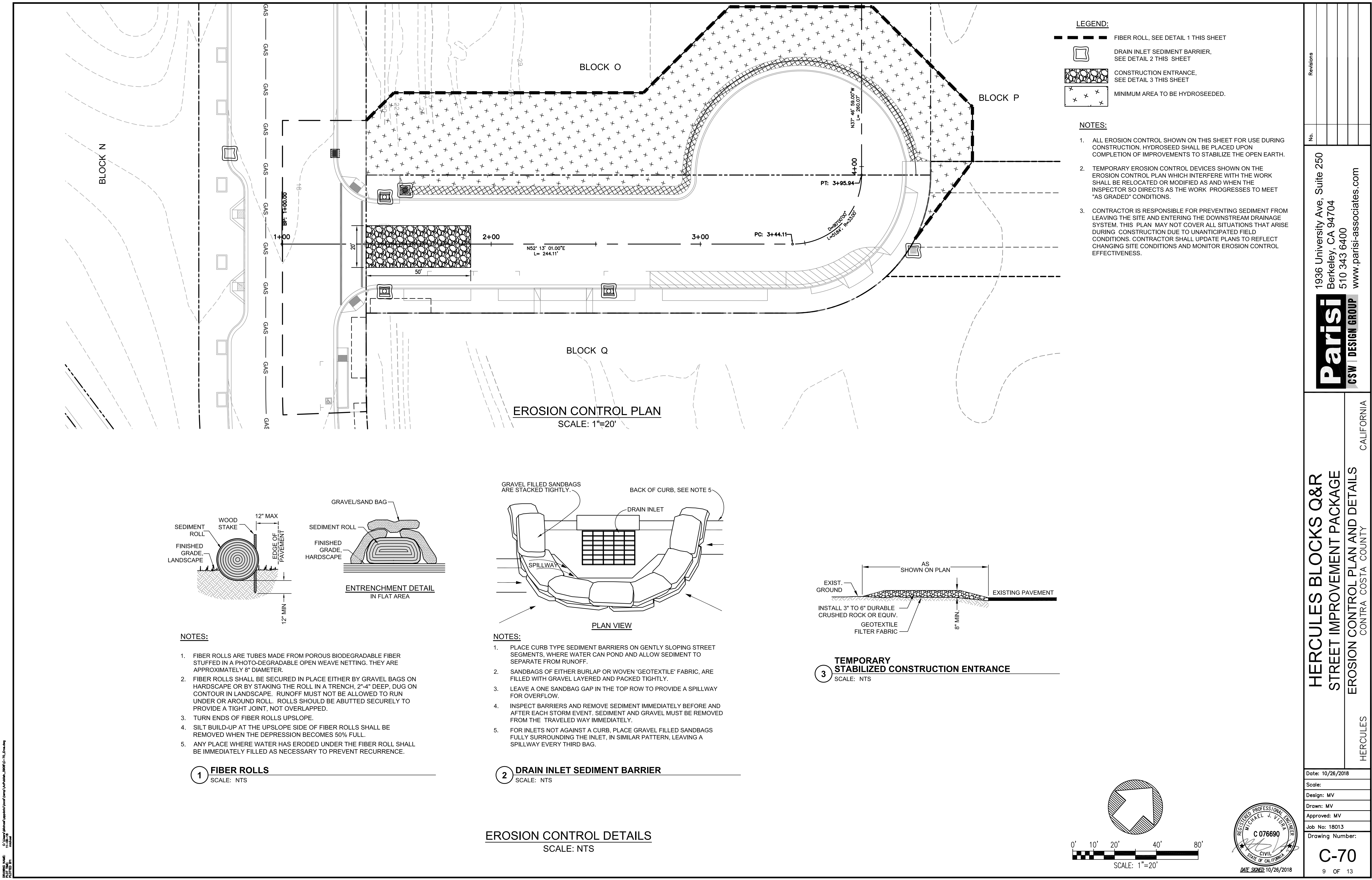
- LEGEND:
- PROPERTY LINE
 - SS SANITARY SEWER LINE (PVS SDR 26) SEE PLAN FOR SIZE
 - SD STORM DRAIN LINE (RCP) SEE PLAN FOR SIZE
 - W WATER LINE (PVC C900) SEE PLAN FOR SIZE
 - G GAS LINE (BY PG&E) SEE PLAN FOR SIZE
 - FW FIRE WATER, SEE PLAN FOR SIZE
 - STREET LIGHT, SEE DETAIL 6 ON SHEET C-90
 - FH FIRE HYDRANT, PER EBMUD STANDARDS
 - PRECAST MANHOLE, SEE COHSP D-1
 - CURB INLET TYPE 'D', SEE COHSP D-7.1
 - STORM DRAIN INLET
 - DRAIN INLET, SEE DETAIL 4, SHEET C-90
 - WV WATER VALVE
 - WM WATER METER

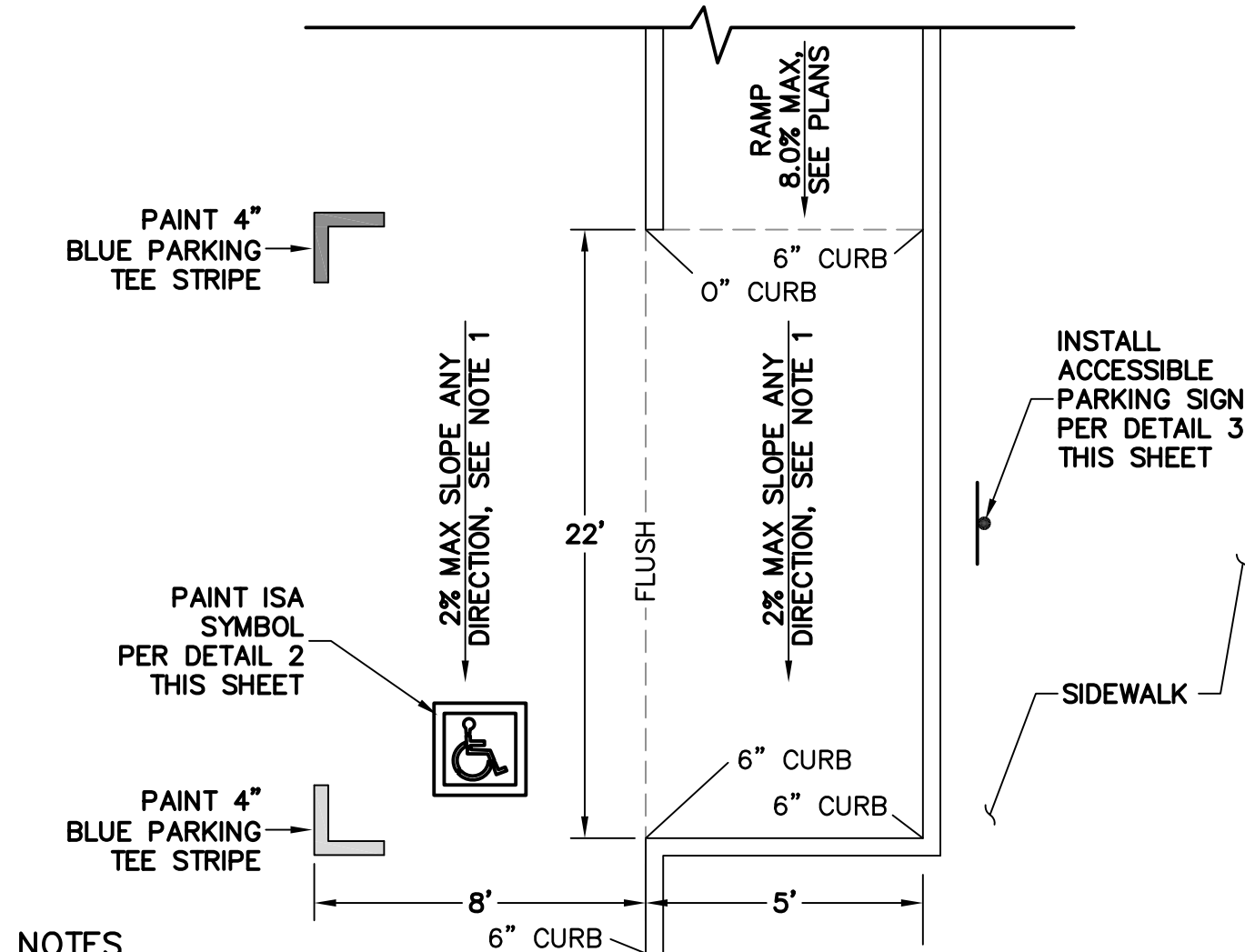
- NOTES:
- THE EXISTING UTILITIES ON THESE PLANS ARE DERIVED FROM RECORD DATA, AS-BUILT DOCUMENTS, TOPOGRAPHIC DATA, AND THE ENGINEERS KNOWLEDGE OF THE SITE AND ARE APPROXIMATE ONLY. CONTRACTOR SHALL VERIFY LOCATIONS PRIOR TO PERFORMING WORK.
 - THE EXISTING PUBLIC STORM DRAIN INFRASTRUCTURE DISCHARGES INTO A REGIONAL WATER QUALITY BASIN INSTALLED PER THE PATH TO TRANSIT PROJECT, CITY PROJECT NUMBER 63001D.

- ABBREVIATIONS:
- | | | | |
|-------|-----------------------------------------------|-------|--------------------------|
| CB | CATCHBASIN | JT | JOINT TRENCH |
| COHSP | CITY OF HERCULES STANDARD PLAN COMMUNICATIONS | RCP | REINFORCED CONCRETE PIPE |
| COM | COMMUNICATIONS | SD | STORM DRAIN |
| E | ELECTRICAL | SDM | STORM DRAIN MANHOLE |
| ELEV | ELEVATION | SDL | STORM DRAIN LATERAL |
| EX | EXISTING | SL | STREETLIGHT |
| FDC | FIRE DEPARTMENT CONNECTION | SS | SANITARY SEWER |
| FW | FIRE WATER | T | TELEPHONE |
| FH | FIRE HYDRANT | UT(F) | UTILITY (FIBER) |
| GR | GRATE | W | WATER |
| INV | INVERT ELEVATION | WM | WATER METER |
| MH | MANHOLE | WV | WATER VALVE |



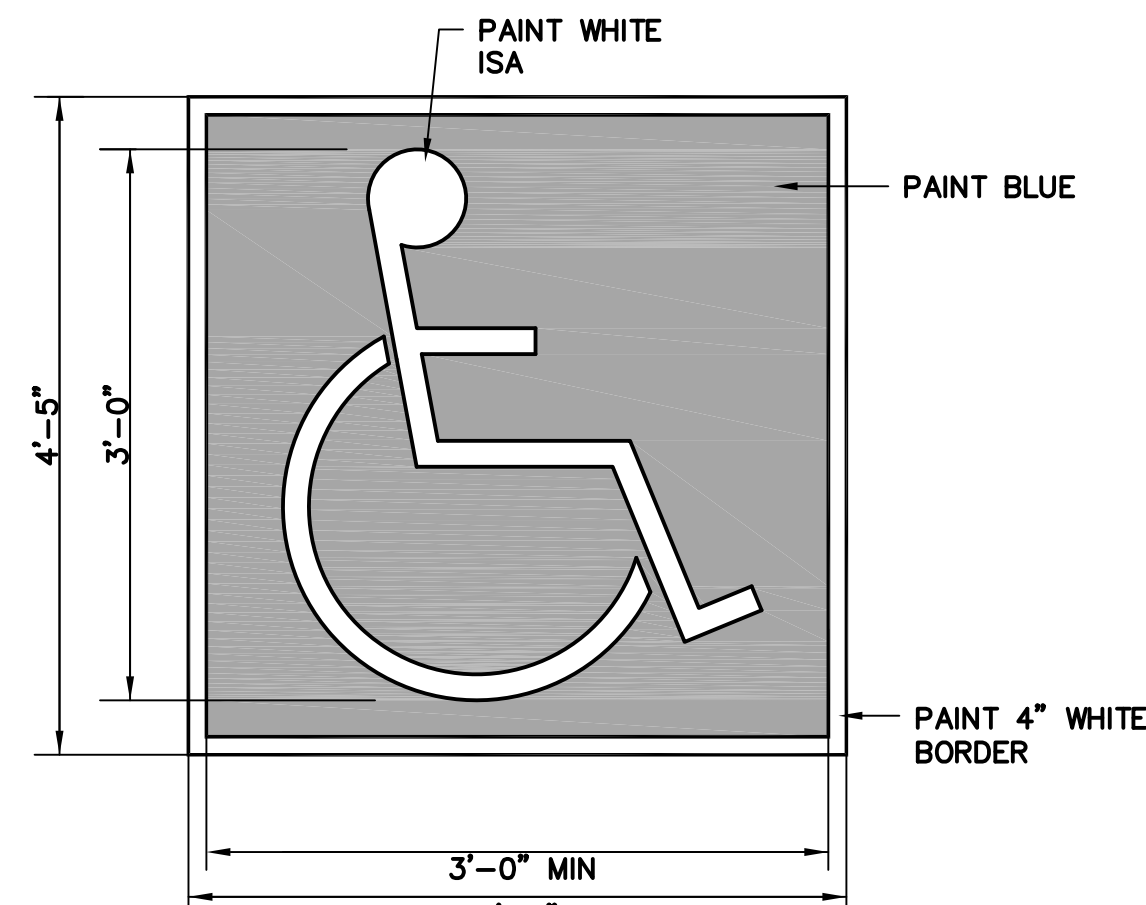
Revisions	
No.	
1936 University Ave, Suite 250 Berkeley, CA 94704 510 343 6400 www.parisi-associates.com	
Parisi CSW DESIGN GROUP	
HERCULES BLOCKS Q&R STREET IMPROVEMENT PACKAGE UTILITY PLAN AND PROFILE CONTRA COSTA COUNTY HERCULES CALIFORNIA	
Date: 10/26/2018	
Scale:	
Design: MV	
Drawn: MV	
Approved: MV	
Job No: 18013	
Drawing Number:	
C-60	
8 OF 13	





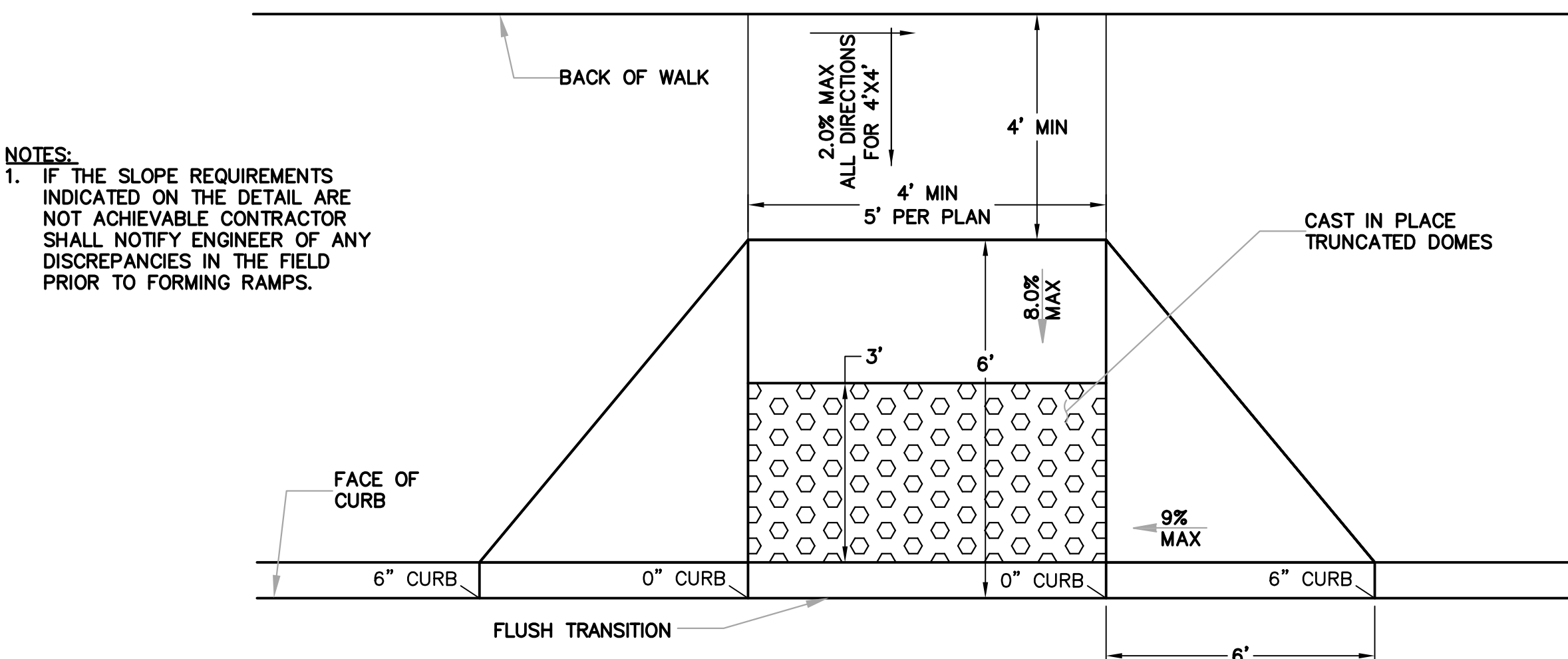
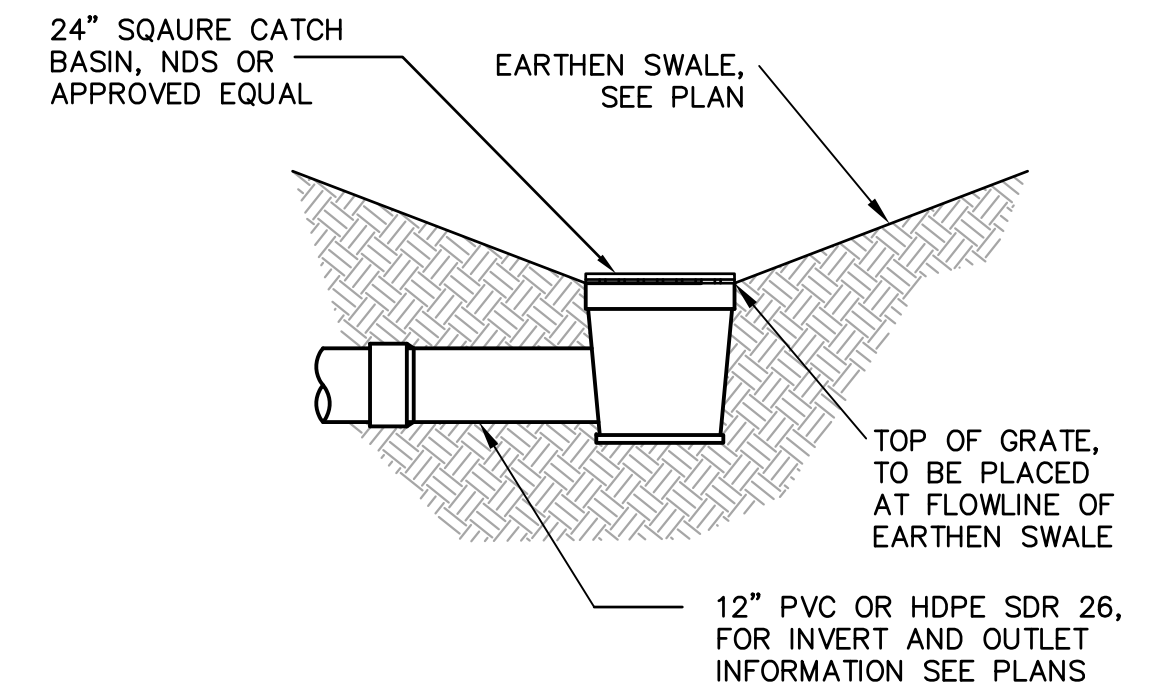
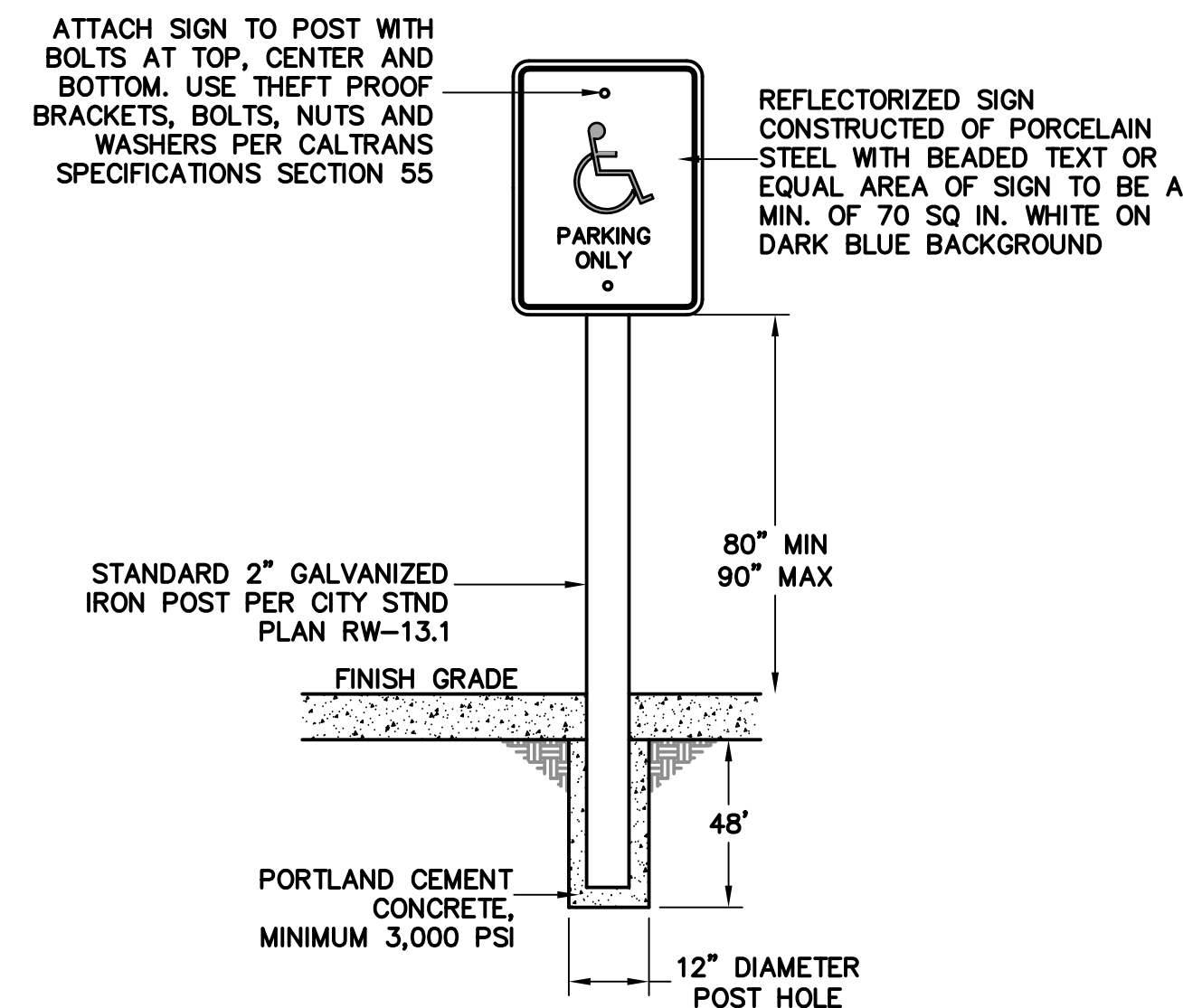
NOTES

1. SURFACE OF THE PARKING SPACE(S) AND ACCESS AISLE(S) DOES NOT EXCEED 1:50 (2.0%) IN ANY DIRECTION
2. CURB RAMP REQUIRED AND SHALL BE BEYOND THE LIMITS OF THE LOADING AND PARKING ZONE, SEE PLANS FOR PROPOSED CURB RAMP LOCATIONS AND GRADING.



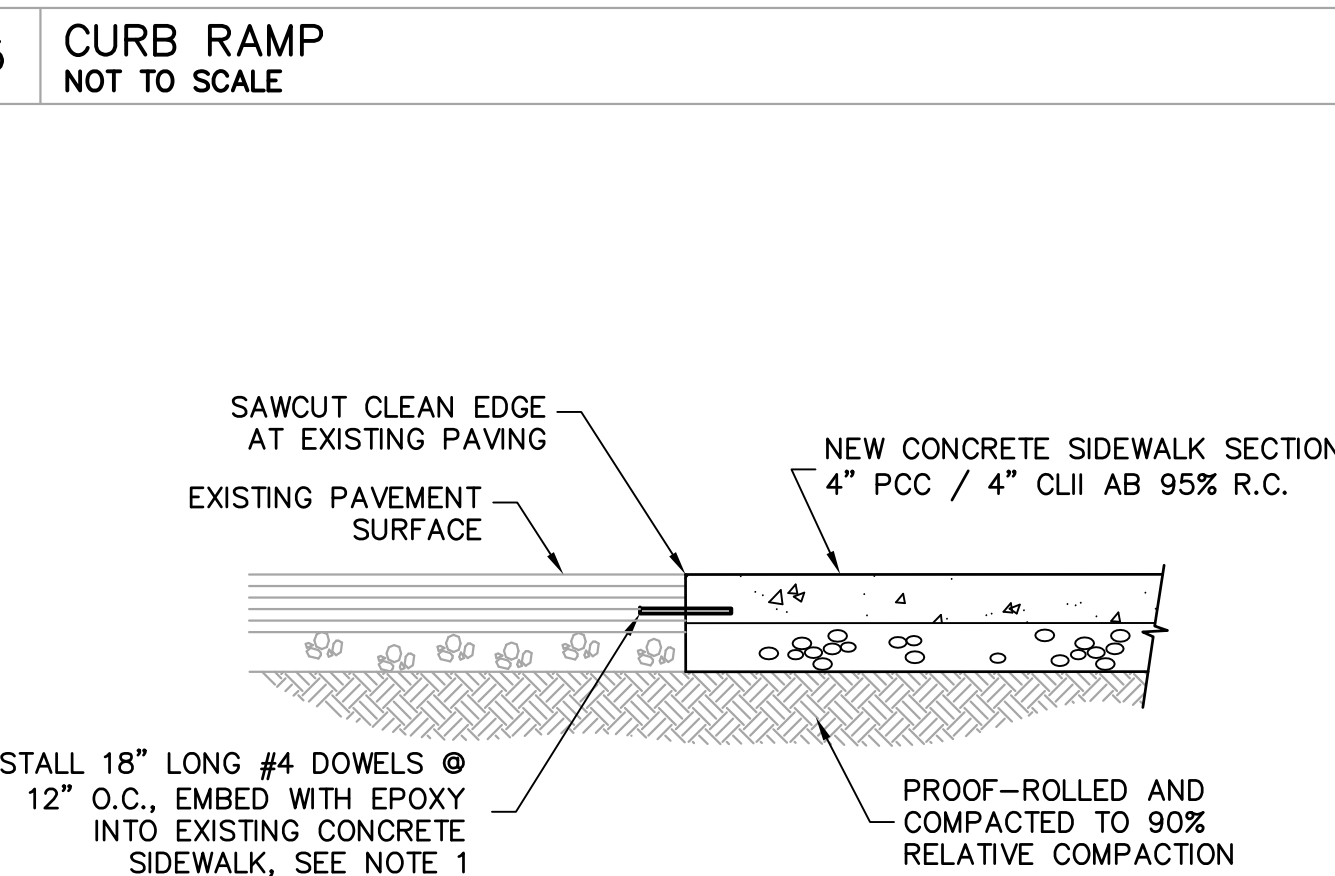
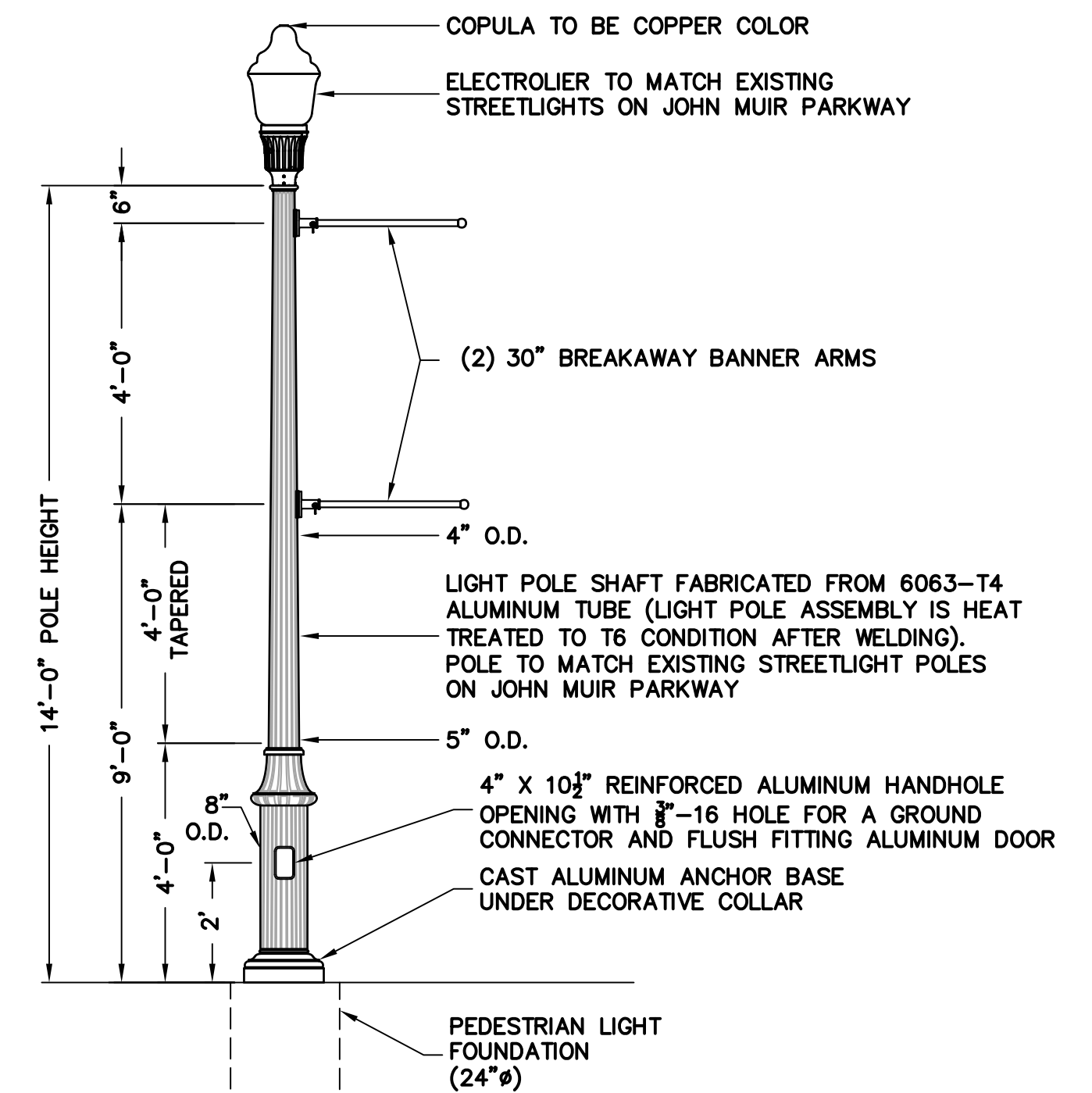
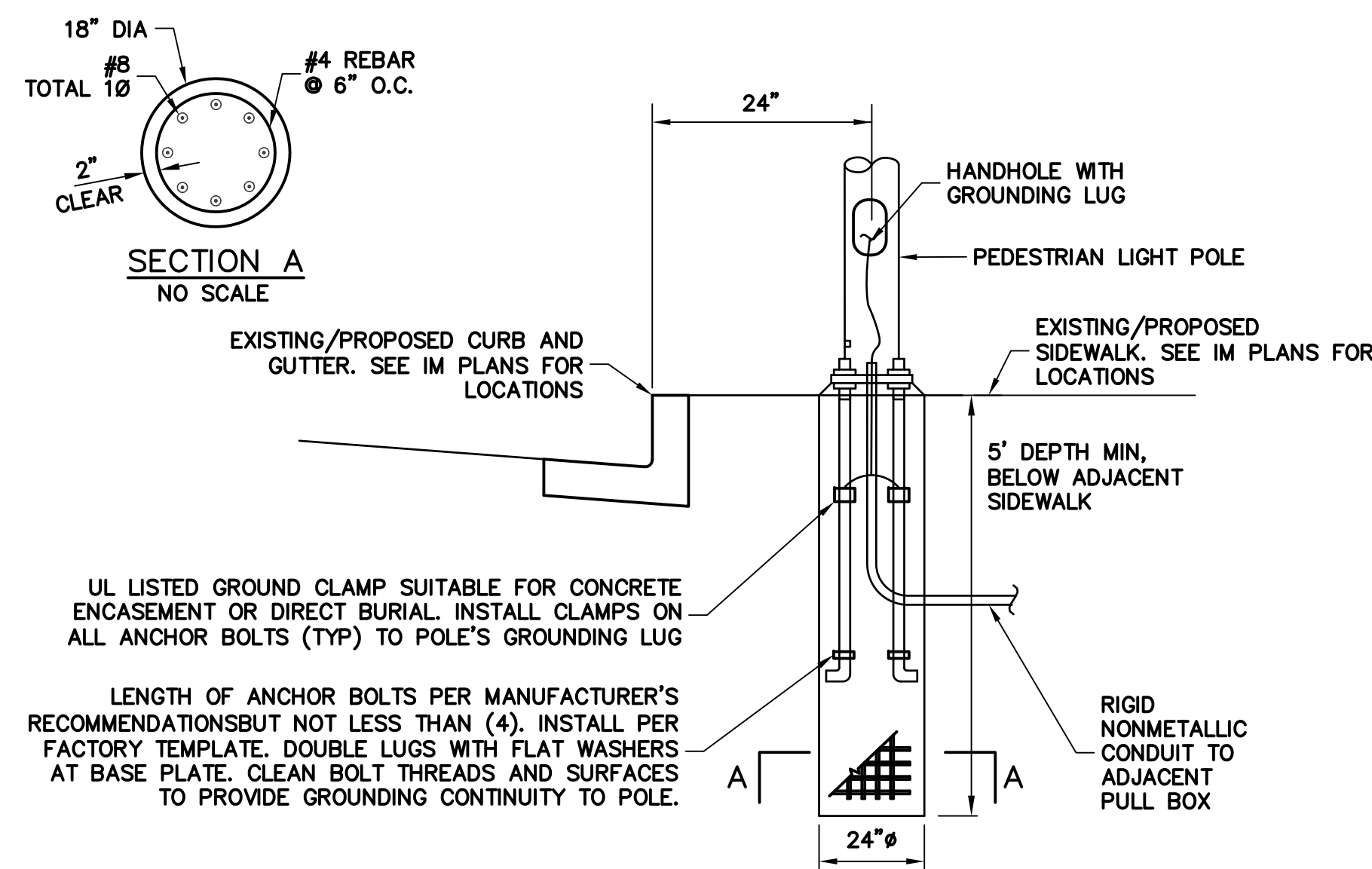
NOTES

1. PER CALTRANS STANDARD PLAN A24C.



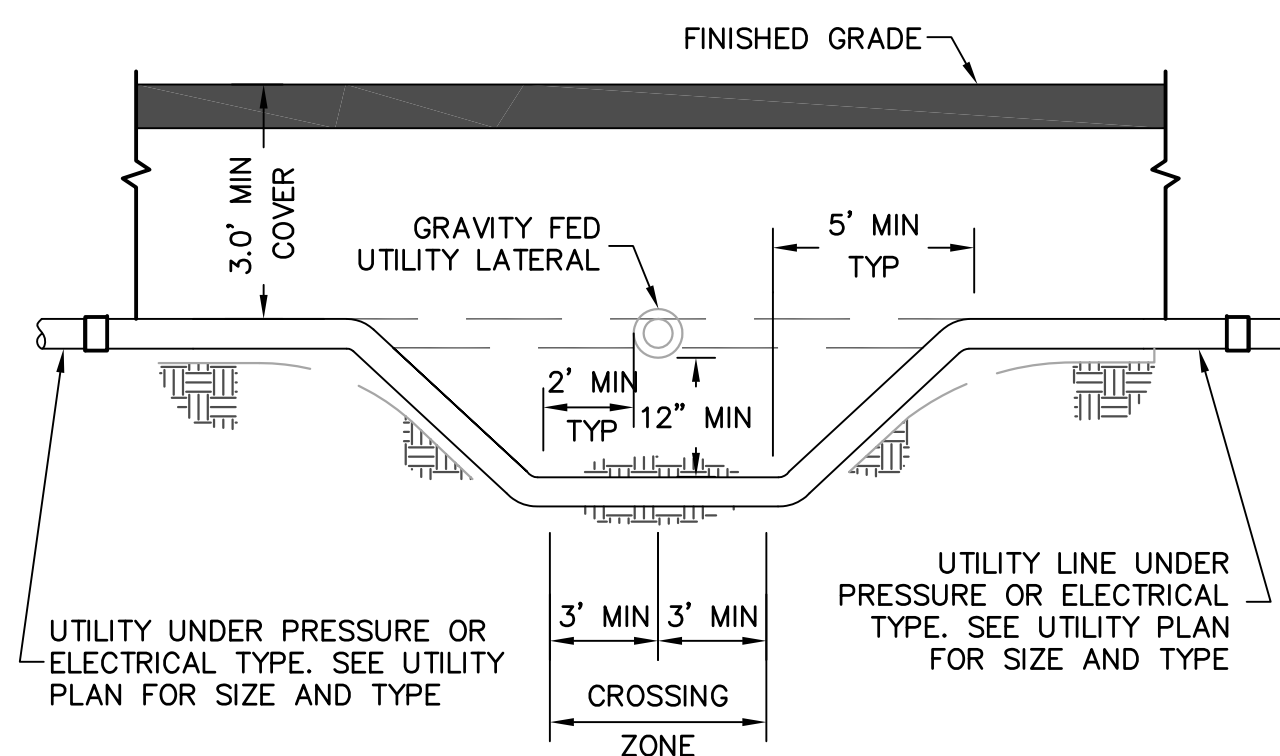
NOTES:

1. IF THE SLOPE REQUIREMENTS INDICATED ON THE DETAIL ARE NOT ACHIEVABLE CONTRACTOR SHALL NOTIFY ENGINEER OF ANY DISCREPANCIES IN THE FIELD PRIOR TO FORMING RAMPS.



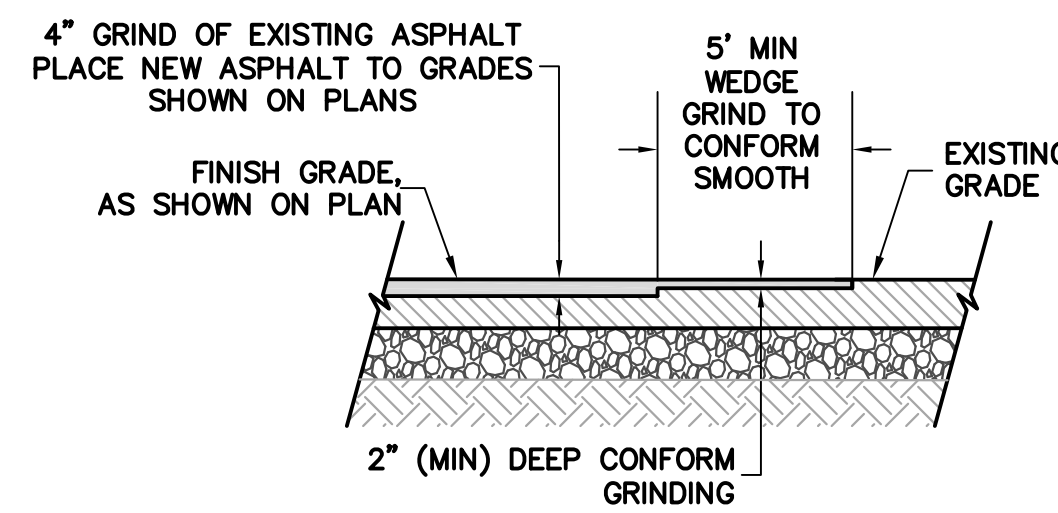
NOTE:

1. EPOXY REBAR COATING SHALL BE BY SIMPSON STRONG-TIE COMPANY INC., PRODUCT SET-XP EPOXY ADHESIVE OR APPROVED EQUAL. ICC REPORT NUMBER ESR-3372



NOTE:

1. CONTRACTOR SHALL MAINTAIN THE COVER AND SEPARATION REQUIREMENTS SHOWN ABOVE WHEN UTILITY CROSSINGS ARE ABOVE THE UTILITY LATERAL.



MILL & FILL CONFORM

NOTES

1. CONFORM GRADING OF ASPHALT CONCRETE SHALL BE 2"(MIN) DEEP WITH VARYING WIDTH.
2. TACK COAT SHALL BE APPLIED COMPLETELY TO ALL EXISTING AC AND PCC SURFACES PRIOR TO PLACEMENT OF NEW ASPHALT CONCRETE

AB
AC
CL
CLR
DIMEN
E.W.
EX
FT
H: V
INV
MAX
MIN
NO.
O.C.
O.C.E.W.
PCC
PSI
PVC
R
R.C.
S
SS
TYP
VERT

AGGREGATE BASE
ASPHALT CONCRETE
CLASS
CLEAR _____
DIMENSION _____
EACH WAY
EXISTING
FEET
HORIZONTAL TO VERTICAL
INVERT
MINIMUM
MAXIMUM
NUMBER
ON CENTER
ON CENTER EACH WAY
PORTLAND CEMENT CONCRETE
POUNDS PER SQUARE INCH
POLYVINYL CHLORIDE
RADIUS
RELATIVE COMPACTION
SLOPE
SLOPE SADDY SEWER
TYPICAL
VERTICAL



1936 University Ave, Suite 250
Berkeley, CA 94704
510 343 6400
www.parisi-associates.com

Parisi
CSW | DESIGN GROUP

HERCULES BLOCKS Q&R
STREET IMPROVEMENT PACKAGE

CONSTRUCTION DETAILS
CONTRA COSTA COUNTY

HERCULES

Date: 10/26/2018
Scale:
Design: MV
Drawn: MV
Approved: MV
Job No: 18013
Drawing Number:

C-90