



Regional Intermodal Transit Center *Hercules, CA*

Let's Get



Moving!

Add a Train Stop in Hercules

What is the RITC?

R Regional **I** Intermodal **T** Transit **C** Center



A near-term, realistic and affordable rapid transit alternative to I-80

A future transportation hub for West Contra Costa and southern Solano Counties, connecting a new train stop with bicycle, pedestrian, bus, carpool and potential future ferry service



Legend

- Rail line
- Possible Ferry Access
- Major roads/freeways
- SF Bay Trail



The RITC is a future transportation hub for Hercules – located adjacent to Bayfront Transit Village – connecting a new train stop along the Capitol Corridor between Richmond and Martinez Stations with bicycle, pedestrian, bus, carpool and potential future ferry service. This multi-modal, transit-oriented development will reduce the need for vehicle travel while delivering affordable, convenient alternative transportation options and connections to local and regional destinations/activity centers. The California Department of Housing and Community Development has designated the RITC Project and adjoining Bayfront Transit Village as one of thirteen Catalyst Projects in the State of California.



RITC

Hercules

80

4

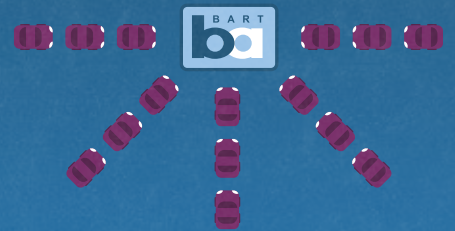
Regional Transportation Facts



Northern California's
most jammed freeway



Local and regional travelers
dependent on I-80 to travel
to **San Francisco, Alameda
County, South Bay and
Sacramento**



Limited transit options within the
I-80 corridor requires travelers to
drive on congested roads to
access Capitol Corridor, BART
or AC Transit stations

CONGESTION



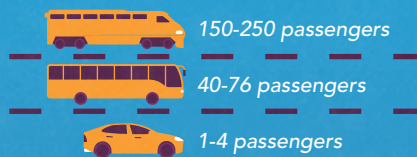
I-80 consistently ranked
**one of the most
congested transportation
corridors in the nation**



Commutes along I-80 projected
to **increase 23% by 2040**



Traffic congestion on I-80 is unpredictable
any time of the day or night



Transit offers a **higher capacity
travel option per vehicle**, which
promotes fewer cars on the road



Congestion on I-80 **restricts
mobility for local residents**
and **negatively impacts
business activity** in the region

*RITC will increase transit
options, diverting
commuters from
roadways to more safe,
sustainable and efficient
alternative ways of
reaching their destination.*

GREENHOUSE GAS EMISSIONS & PUBLIC HEALTH



I-80 traffic congestion
directly contributes to
poor air quality due to
greenhouse gas emissions



RITC promotes health benefits by creating
accessible and sustainable travel options that **lower
stress, promote physical activity and improve air
quality** like transit, walking and biking

*RITC in Hercules
supports many
alternatives to driving.
Less cars on the road
will reduce the carbon
footprint of the
corridor.*

RITC Benefits

RITC will provide travelers with multimodal connections to local and regional bus services, potential future ferry routes to San Francisco, and connections to the Capitol Corridor with access to Alameda County, the South Bay, and Sacramento. The RITC is designed to be safe and will accommodate mid-and end-of-century sea level rise (SLR) projections to 2067. In addition, the station, plaza, access roadways, and Bay Trail are all designed at an elevation above projected sea level rise. While the Union Pacific Railroad (UPRR) tracks, bridge, and associated platform were determined to potentially be impacted by sea level rise in the next 50 years, an adaptive management plan was developed to include strategies for raising UPRR facilities in order to address sea level rise future needs.



**CAPITOL
CORRIDOR**

38
DAILY TRAINS

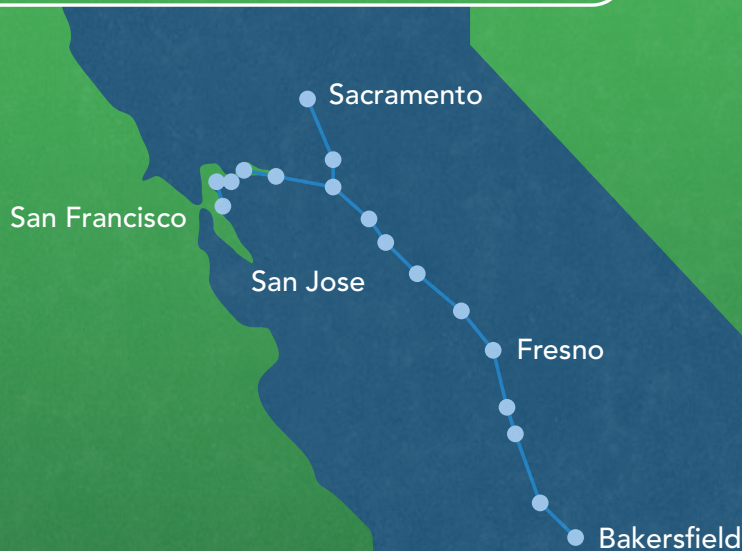
linking West Contra Costa County to rest of Bay Area and Sacramento region

17
STATIONS

serving several counties in Bay Area including Sacramento, Alameda, San Francisco and Santa Clara counties

Capitol Corridor passenger train system provides a **fast, reliable, affordable, convenient, and less stressful** alternative to driving along congested I-80, I-680 and I-880 freeways.

Provides a **vital connection** to Richmond BART station and regional Amtrak service



San Joaquin Amtrak service runs multiple times daily between San Francisco Bay Area (or Sacramento) and Bakersfield



Links to numerous **local and regional bus services**, providing a means for commuters to access RITC and serve as a key intermodal connection



Future potential ferry terminal allowing travelers to access through park and ride, drop-offs, transit, biking and walking. Ferry service would link the region to other ferry terminals in Bay Area



Transit-Oriented Development helping generate additional transit ridership, most of which would be **walk access trips** including residents of Pinole and Rodeo that use the San Francisco Bay Trails.

ENVIRONMENTAL BENEFITS

RITC diverts future automobile trips to rail and bus, **reducing vehicle miles traveled (VMT)**, **improving traffic conditions** and **providing health benefits** for area residents who walk and bike to the site.



ECONOMIC BENEFITS

Less automobile trips means:

- increased productivity (reduced time spent traveling)
- reduced vehicle maintenance and depreciation costs
- less traffic accidents

RITC will provide **better access** to current and future jobs



TOTAL PROJECTED
2040 VMT
REDUCTION

14,250 **4.3M**
daily annually

TOTAL MONETARY
VALUE OF 2040
VMT REDUCTION

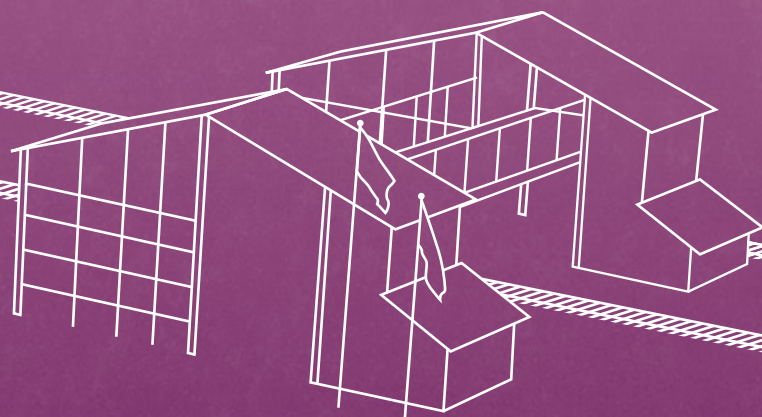
\$3,000 **\$1M**
daily annually

=

Capitol Corridor System Map



Capitol Corridor Boardings for RITC in Hercules



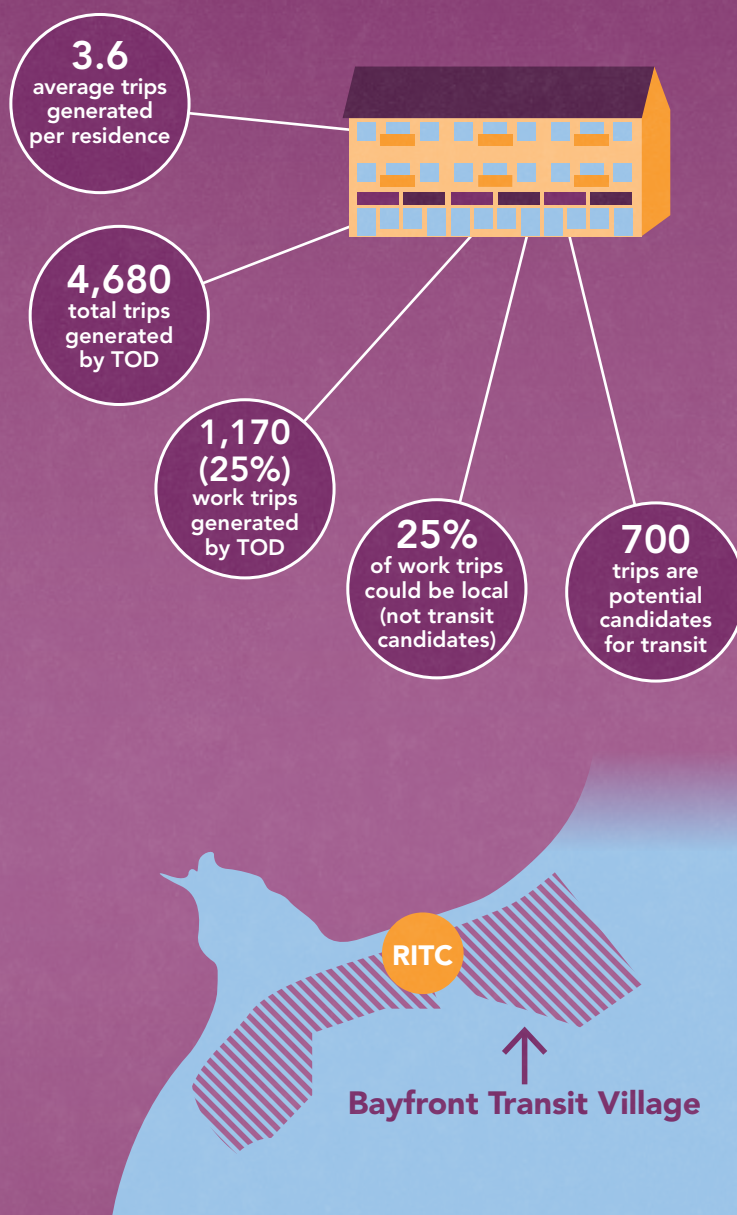
430 ▶ Projected 2040 daily boardings

131,150 ▶ Projected 2040 annual boardings to RITC in Hercules

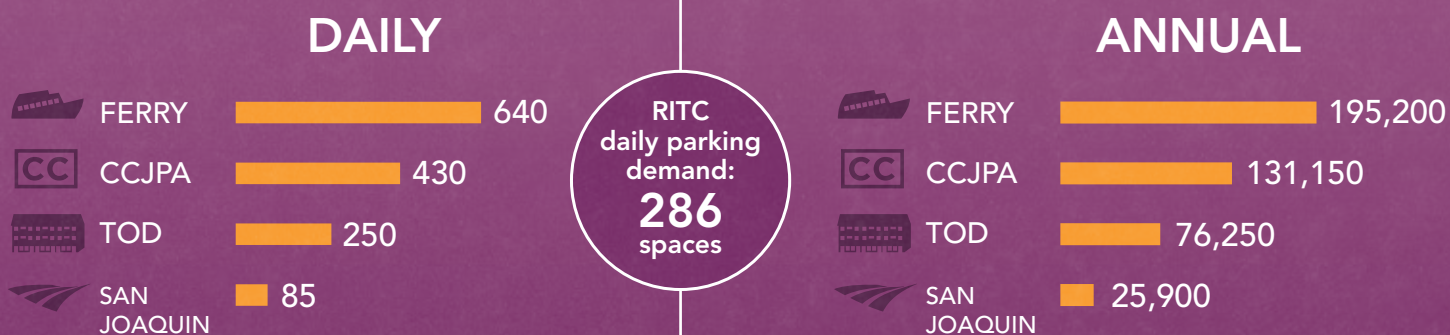
RITC in Hercules is projected to have very competitive ridership in comparison to other existing Capitol Corridor stations.

Transit-Oriented Development

The RITC is located adjacent to the Bayfront Transit Village, a new robust **Transit Oriented Development (TOD)** planned with **1,400 affordable residential units** and **340,000 square feet of retail, commercial office and additional industrial/office space**. Since the RITC will be within walking distance to the Bayfront Transit Village, it can generate additional transit ridership through local and regional bus as well as passenger rail, most of which would be walk or bike access trips. The RITC will help nearby disadvantaged communities improve the number and type of commute opportunities and provide access to retail and other services close to home and reduce overall trip demand, thereby contributing to social, environmental, economic and health benefits.



Projected 2040 Station Boardings



Let's Get



Moving!

Add a Train Stop in Hercules

Learn more and help us get I-80 moving!
Sign up today on the project website and like us on Facebook
to show your support for a train stop in Hercules!



facebook.com/HerculesTrainStop



herculestrainstop.com