

CONNECTING COMMUNITIES

Tim Haile, Executive Director

Contra Costa Transportation Authority



CONTRA COSTA
transportation
authority

What We Do



PEDESTRIAN

Improvements to sidewalks, crosswalks, trails, and paths



LOCAL STREETS

Smooth traffic flow on major roads and make surface improvements such as pothole repairs



BUSES

Invest in a reliable, comfortable and convenient bus network



SAFE ROUTES TO SCHOOLS

Focus on programs and projects aimed at bicycle and pedestrian safety for K-12 students



FERRIES

Expand ferry system by looking to ferries as an alternate commute method between West County and San Francisco



BICYCLE

Invest in safe routes and infrastructure improvements for bicyclists



BART

Improve BART service and stations, extend routes and increase parking



HIGHWAYS

Complete Contra Costa's highway system, and improve air quality and noise protection along corridors



INNOVATIVE SOLUTIONS

Implement smart transportation infrastructure to reduce congestion and encourage greener travel



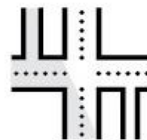
PROGRAMS FOR SENIORS AND DISABLED

Enhance transit options to improve mobility for seniors and people with disabilities

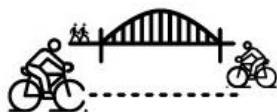


CALDECOTT TUNNEL
fourth bore opens

**I-680
IMPROVEMENTS**
express and auxiliary lanes opened



ROAD WIDENING
Kirker Pass Road and Vasco Road



**BICYCLE AND PEDESTRIAN
IMPROVEMENTS**
Treat Blvd and San Pablo Dam Road

**HIGHWAY 4
IMPROVEMENTS**



BART EXTENSIONS
to Pittsburg City Center and Antioch



TRAIN STATION
Richmond

**I-680/SR-4
IMPROVEMENTS**



**EXPANDED AND
IMPROVED TRAILS**



Leverage Local Funding

3:1

LEVERAGING
RATIO



Tipping Point



UNDERSTANDING TRAVEL BEHAVIOR

Three innovative studies to shape the future of transportation in Contra Costa County.



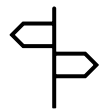
Travel habits



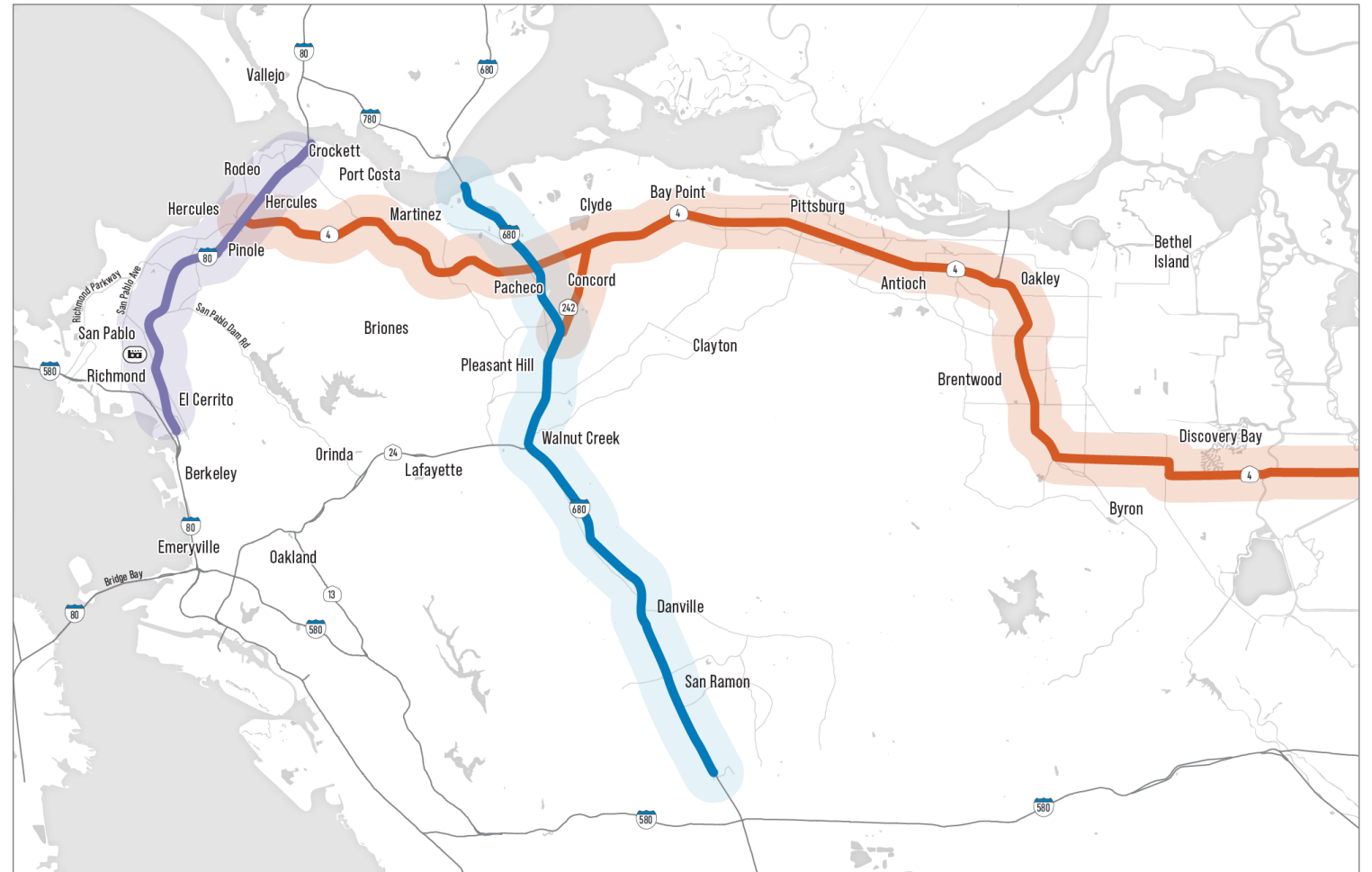
Motives and barriers



Potential modes of travel

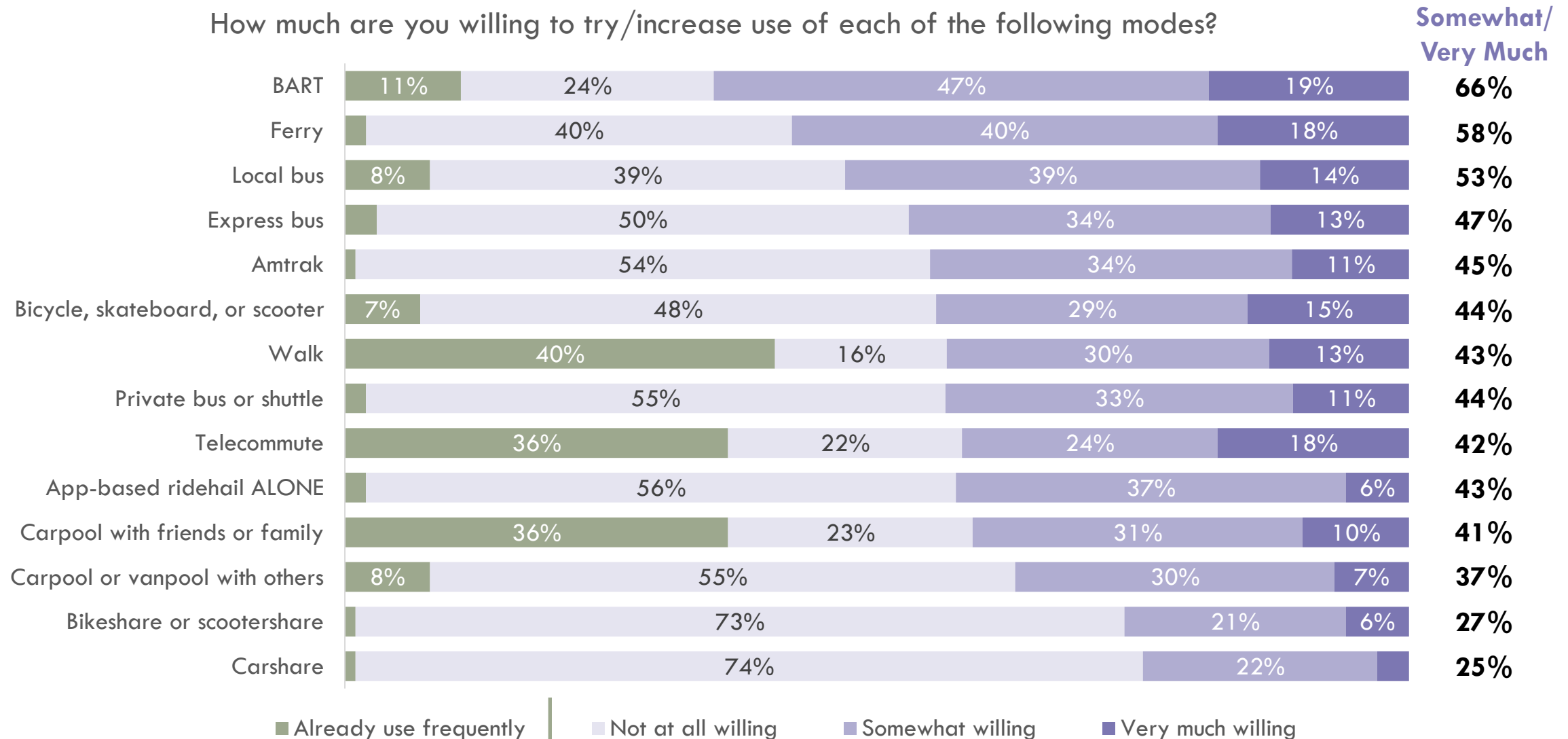


Project feedback



I-80 | Willingness to Try/Increase Modes

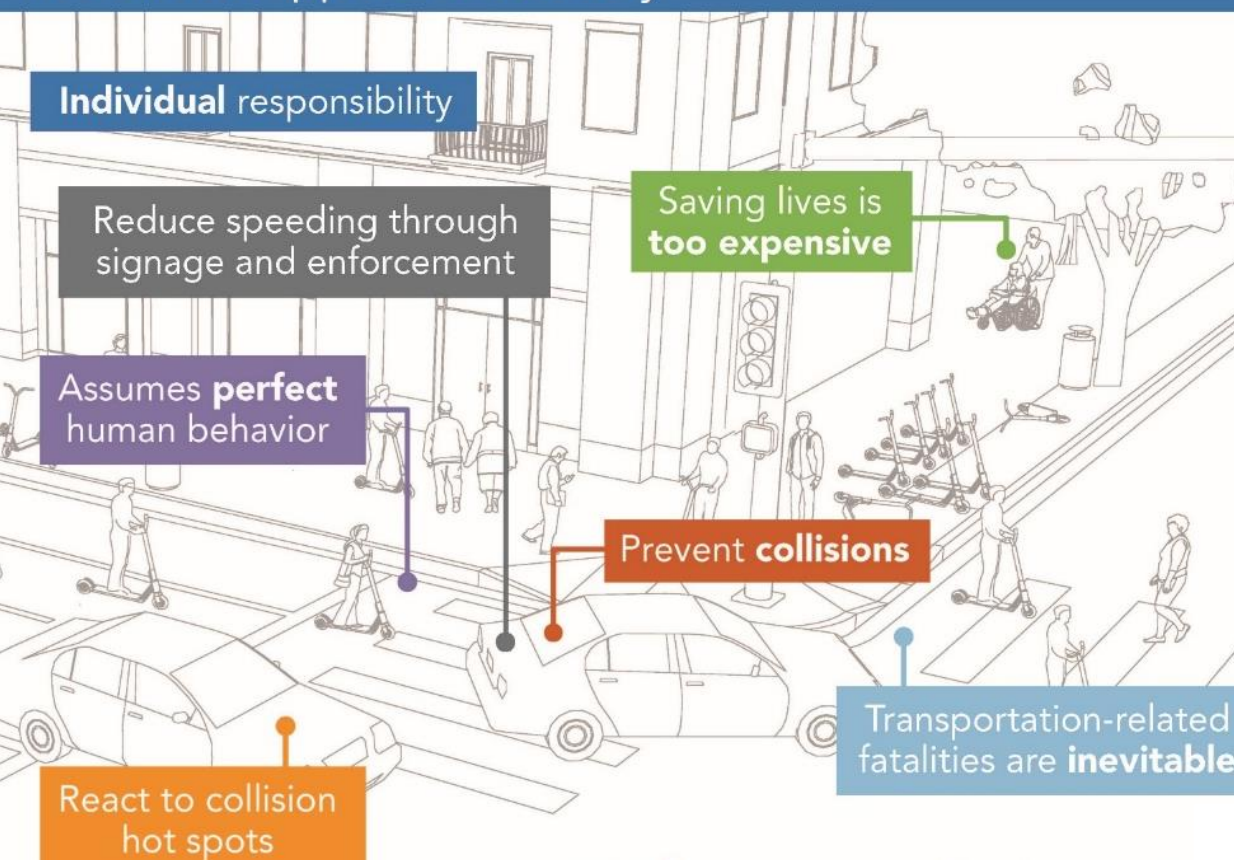
How much are you willing to try/increase use of each of the following modes?



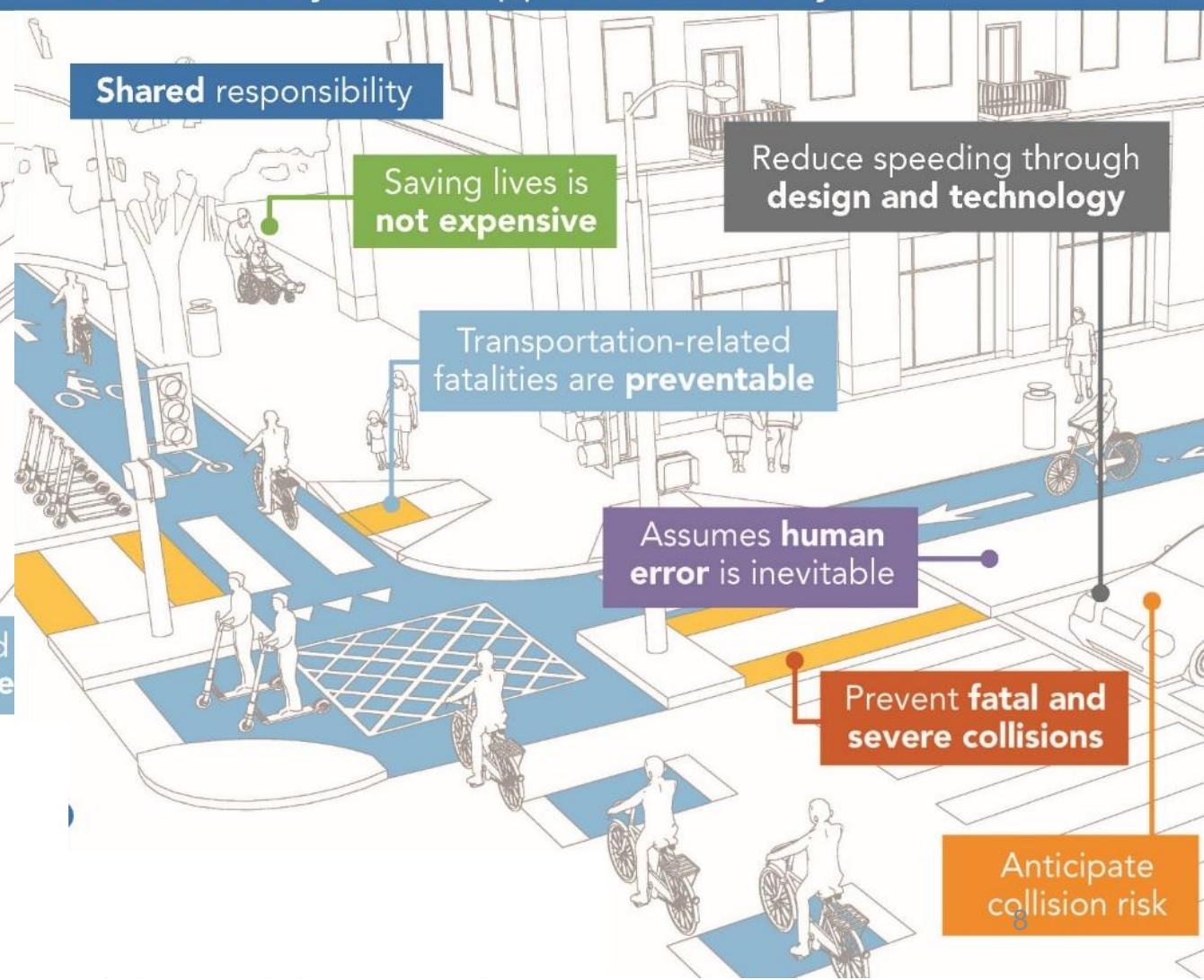
Vision Zero



Traditional Approach to Safety



Vision Zero Systemic Approach to Safety





TRANSIT FIRST

Leading an effort to building a better transportation system

- Optimize existing transit network
- Identify strategies and infrastructure
- Development of transit and mobility hubs
- Creating first and last mile connections
- Moving to zero emissions
- Addressing equity priority communities
- Overcoming institutional challenges
- Identify local and regional service funding

Countywide Safety through Connected Signal System



- Developing Countywide Synchronized Signal System to install modern traffic controllers in all 19 cities and towns in Contra Costa County to:
 - Proactive approach to safety by identifying 'close call' situations and preventing future tragedies
 - Installing bicycle detection software
 - Prioritization and potential corridor-clearing for emergency vehicles
 - Transit vehicle priority
 - Smart infrastructure
 - Controlling and smoothing traffic flow

Clean Corridors



Expanding Ferry Service

- Increase Transit Options
- Mode Shift
- Emergency Response
- Provide Connections to Hercules, Martinez, Pittsburg, and Antioch
- Landside improvements and first-last mile connections



Regional Intermodal Transit Center

- New Capitol Corridor train stop in Hercules
- 38 trains daily to the Bay Area and Sacramento region
- Connections with local and regional buses
- Ferry Service to San Francisco
- Connectivity to Richmond BART and Amtrak
- Shared mobility hub



MOBILITY FOR ALL

Accessible Transportation Strategic Plan

TRANSPORTATION NEEDS AND GAPS

The project team's review of existing conditions and survey data identified key needs and gaps in accessible transportation in Contra Costa County. These include:



New Funding – Grants are sometimes available for planning and pilots, but all recommendations will require new sustainable funding



Safety – Many respondents feel unsafe while traveling



Volunteer Driving Programs – Additional volunteers are needed, with more reliable funding to increase capacity



Medical Access – The Regional Medical Center and VA Medical Center in Martinez need reliable access throughout the county



Quality of Life Visits – Consumers have difficulty making quality-of-life essential trips to visit friends and family, the senior center, and church



Service Coordination – Accessible services need improved coordination because they are siloed between agencies, cities, and non-profit organizations

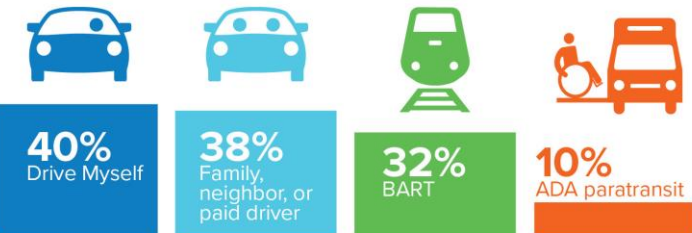
SURVEY RESULTS

Trip Destinations and Challenges

An online survey provided insight into how respondents get where they are going, where they go, and what factors complicate their trips.

Mode to Destination

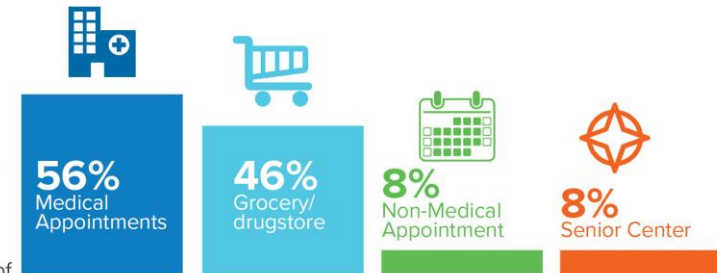
Trips were most commonly made by solo drivers, followed by those driven by a family, neighbor or paid helper. BART was used by about a third of respondents, with ADA paratransit utilized by 10% of the entire survey sample.



* Respondents could choose as many modes as they used. Percentages reflect total respondents (1,063) selecting a particular mode they used.

Destinations

The top destination was medical appointments, with grocery/drugstore shopping in second place. Senior Center trips and non-medical appointments each accounted for an 8% share of destinations.



* Respondents could choose up to three trips that they take most often. Percentages reflect total respondents (1,063) identifying each trip type.

Building a Transportation Plan from the Ground Up

CCTA's Process

- Updated Every 4-5 Years
- Documents the Authority's Goals, Vision, and Strategies
- Action Plans are Developed by the Regional Committees
- Includes 10- and 20-Year Financially Constrained Project Lists



RTPC = Regional Transportation Planning Committee

REDEFINING MOBILITY



Dynamic Personal Mass Transit

A new mobility option being
explored at GoMentum
Station.



INNOVATE 680

6 Projects, 1 Fully Connected Corridor

6 PROJECTS
1 FULLY
CONNECTED
CORRIDOR



Imagine the Possibilities



EXPRESS LANE
TOLL
TO: \$1.50
TO: \$3.50
HOV 2+ NO TOLL W/FASTRAK FLEX

EXPRESS LANE
FASTRAK ONLY
HOV 2+
NO TOLL

SPEED LIMIT
65

SPEED LIMIT
65

Contra Costa Blvd
Monument Blvd
Concord
242
3/4
1
2 1/2

Thank You



Timothy Haile
Executive Director
thaile@ccta.net

