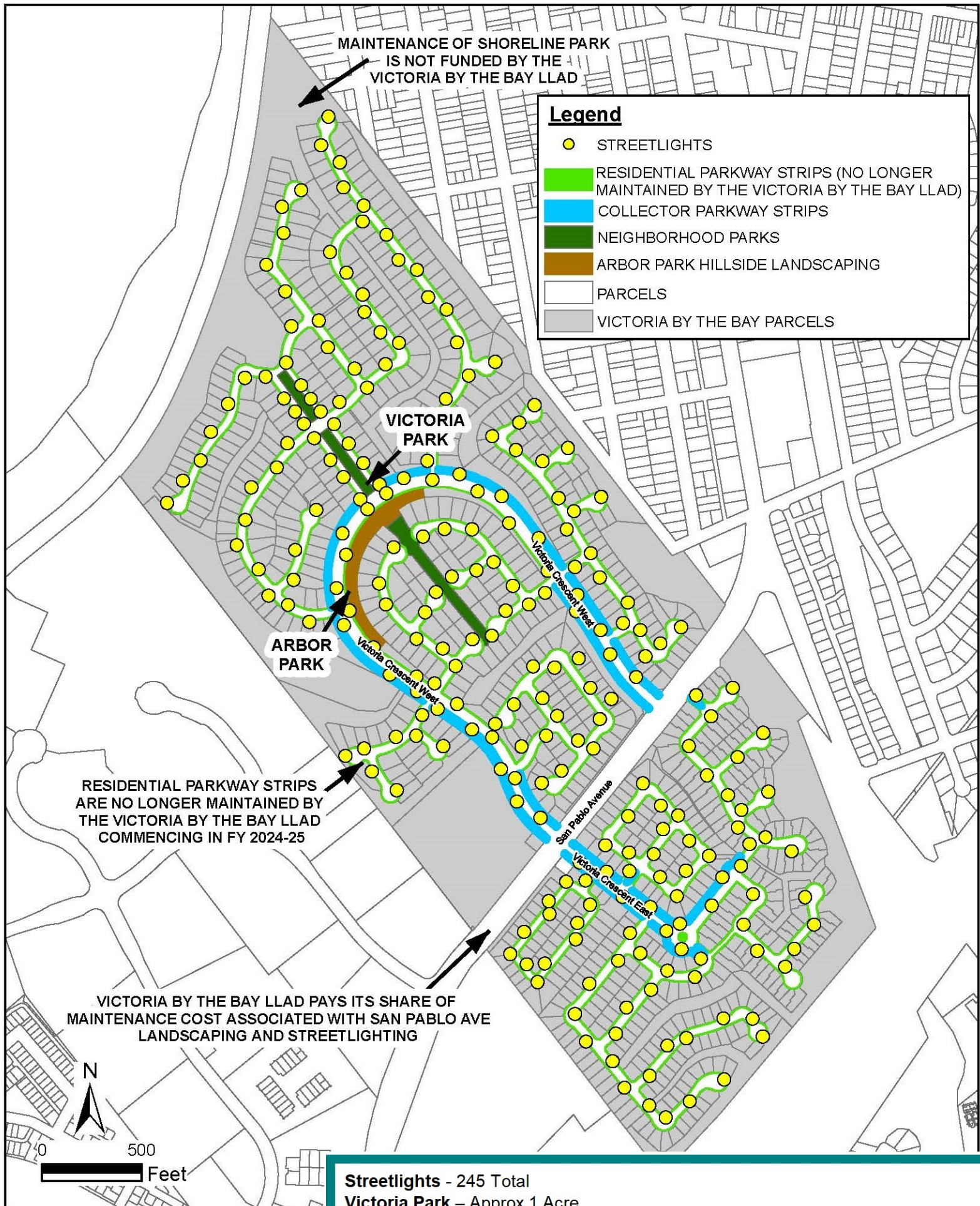


# VICTORIA BY THE BAY

## LANDSCAPING & LIGHTING ASSESSMENT DISTRICT NO. 2002-1

### IMPROVEMENTS DIAGRAM



**Streetlights - 245 Total**

**Victoria Park - Approx 1 Acre**

**Arbor Park - 2.5 Acres**

Includes gazebo, pergola, obelisks, seat walls, benches, park lighting

**Trees - 2,000+ Total**

**Mow Strips - Residential Streets**

**Landscaping on Main Streets** (Includes Victoria Crescent East & West, Craftsman) -  
turf, trees, shrubs, groundcover