



MCE

A local, not-for-profit
electricity provider

Welcome to MCE, Hercules

- Starting in April 2025, all Hercules electric customers—residential, commercial, and municipal—will automatically transition to MCE electric generation service.
- Customers now have the option to choose their energy source: PG&E or MCE.
- This change reflects a decision made by the City Council in 2023 and was approved by the California Public Utilities Commission.

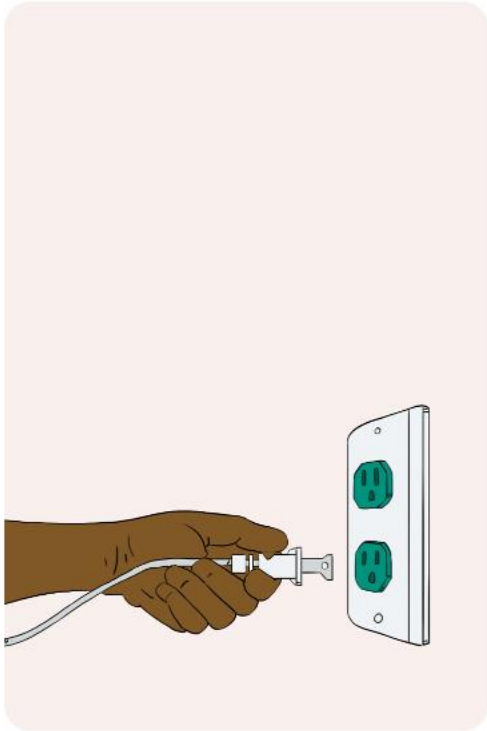
Your Energy,
Your Choice

Who is MCE?

- **Community Choice Energy provider, serving Bay Area customers since 2010.**
- **We are a local government agency, governed by a board of elected officials from the communities we serve, and regulated by the same agencies that oversee PG&E.**
- **We serve nearly 600,000 customers, have saved them over \$83 million on their bills since 2010, and eliminated more than 500,000 metric tons of CO²**

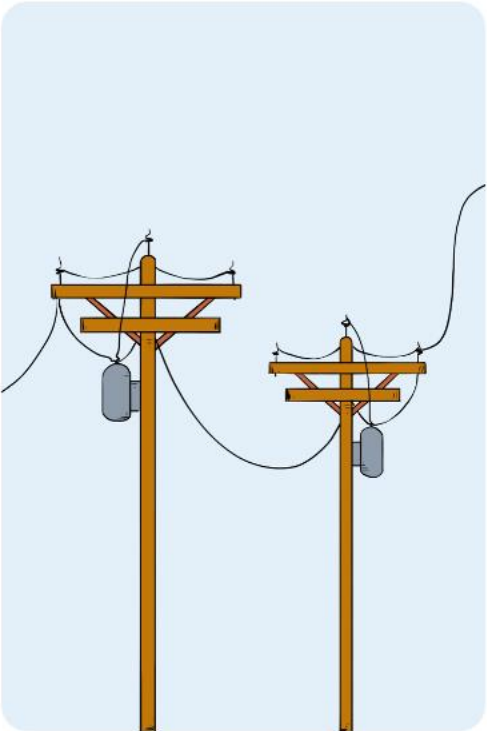


How MCE Works



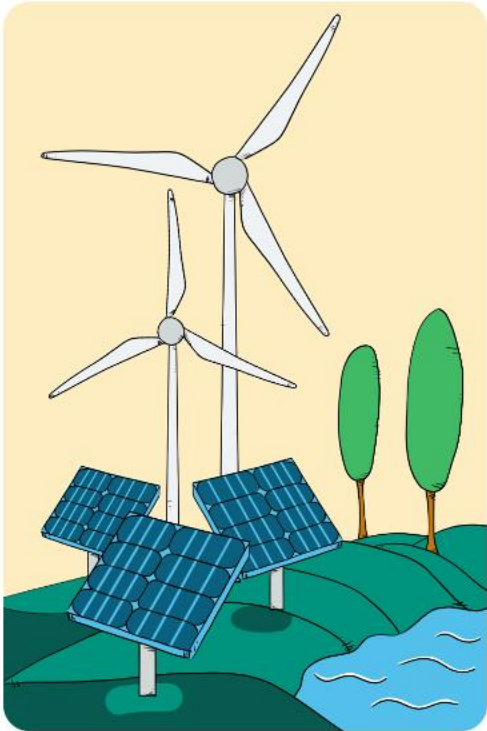
You

Benefit from cleaner air, stable rates, choice, and local control



PG&E

Delivers energy, maintains lines, and sends bills



MCE

Buys and builds fossil-free energy for you


What Hercules Customers Can Expect

Automatic transition to MCE service beginning in April

- Customers will be automatically switched to MCE service starting with the April electric bill.
 - Solar customers will transition at time of true-up
- Monthly utility bills will still come from PG&E.
- Opt out and return to PG&E:
 - Online: mcecleanenergy.org/opt-out
 - By phone: (888) 632-3674.
- There is no charge to opt out within the first 60 days of MCE service. After 60 days, there is a one-time administrative fee to opt out:
 - \$5 for residential accounts
 - \$25 for commercial accounts.




Sample Bill

 ENERGY STATEMENT www.pge.com/MyEnergy	Account No: 0123456789-0
	Statement Date: 06/08/2022
	Due Date: 06/29/2022
Service For: DEE P. GREENE 123 MAIN ST. VALLEJO, CA 94590	Your Account Summary
	Amount Due on Previous Statement \$236.22
	Payment(s) Received Since Last Statement <u>-236.22</u>
	Previous Unpaid Balance \$0.00
	Current PG&E Electric Delivery Charges \$159.36
	Current Gas Charges 19.98
	Total Amount Due by 06/29/2022 \$179.34

With PG&E Service

Sample Bill

 ENERGY STATEMENT www.pge.com/MyEnergy	Account No: 0123456789-0 Statement Date: 06/08/2022 Due Date: 06/29/2022
Service For: DEE P. GREENE 123 MAIN ST. VALLEJO, CA 94590	Your Account Summary Amount Due on Previous Statement \$236.22 Payment(s) Received Since Last Statement -236.22 Previous Unpaid Balance \$0.00 Current PG&E Electric Delivery Charges \$100.46 MCE Electric Generation Charges 47.70 Current Gas Charges 19.98
Questions about your bill? Mon-Fri 7 a.m.-7 p.m. Saturday 8 a.m.-5 p.m. Phone: 1-800-743-5000 www.pge.com/MyEnergy	Total Amount Due by 06/29/2022 \$168.14

MCE charges replaces PG&E's

Residential Cost Comparison

	MCE Light Green 60% RENEWABLE	MCE Deep Green 100% RENEWABLE	PG&E 38% RENEWABLE
Electric Generation	\$64.68	\$69.13	\$72.47
PG&E Electric Delivery	\$129.37	\$129.37	\$129.37
Additional PG&E Fees	\$5.44	\$5.44	\$4.09
Average Total Monthly Cost	\$199.49	\$203.94	\$205.93

Getting the Word Out

Direct Mail and Emails

- All customers will receive direct mail in February.
- Customers will then receive follow-up notification emails in March, April, and May.

Community Workshops

- In-person workshops at Hercules City Hall
 - February 26 and March 26, 6:30 PM
- Virtual workshops
 - March 5, March 12 (*Solar, Storage, EV*)
April 16, May 7, 6:30pm

Dedicated Hercules Webpage
mcecleanenergy.org/Hercules



Thank you!



mceCleanEnergy.org
info@mceCleanEnergy.org