



Hercules City Council Presentation

Dr. Y'Anad Burrell, PhD

Community Affairs Representative

7/14/26

Agenda

- Who is EBMUD?
- Where Your Water Comes From
- Emergency Preparedness
- Contract Equity Program
- Investing in Education
- Caring for the Community
- Questions?

Who is EBMUD?



What is EBMUD?



Jakira Jekayinfa-Brown, Associate Electrical Engineer

- East Bay Municipal Utility District (EBMUD) is a not-for-profit utility
- Governed by a seven-member elected board
- Your rate dollars directly fund operations and capital improvements.
- All additional revenue is reinvested in the system

EBMUD Service Area

Water: 1.4 Million Served

Raw Water System

5 Local Reservoirs

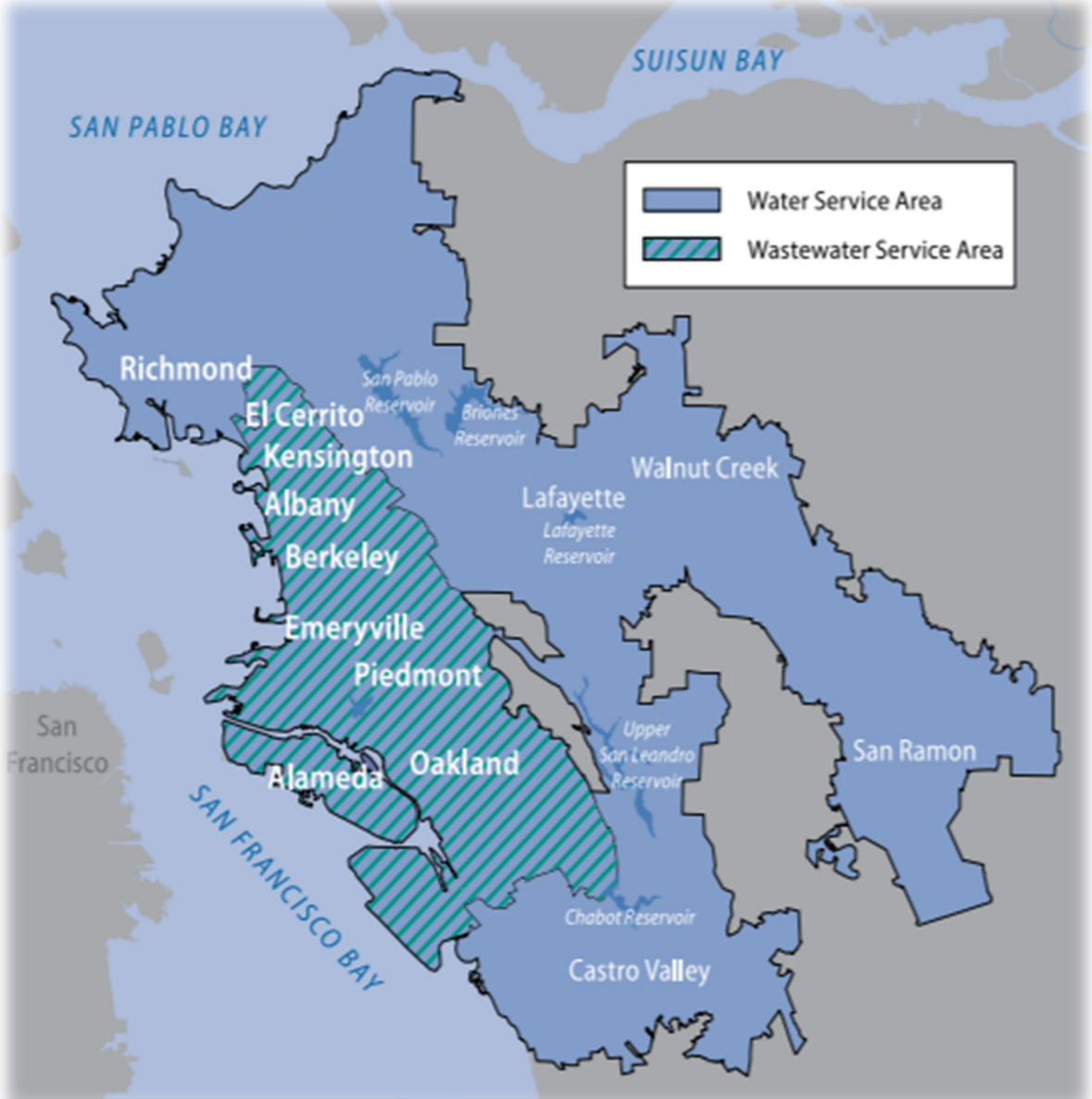
2 Upcountry Reservoirs

Treatment System

6 Water Treatment Plants

Wastewater: 740,000 Served

Wastewater Treatment Plant processes 50 Million Gallons per Day (MGD); up to 320 MGD during wet weather.



EBMUD at a Glance

1¢

average cost per gallon of water delivered



90%

of the water customers use comes from the Mokelumne Watershed in the Sierra Nevada Mountains



50 million

gallons of wastewater treated daily



4,200 miles

of pipes maintained throughout the system



57,000 acres

of watershed land managed for the public



150 million

gallons of water delivered daily

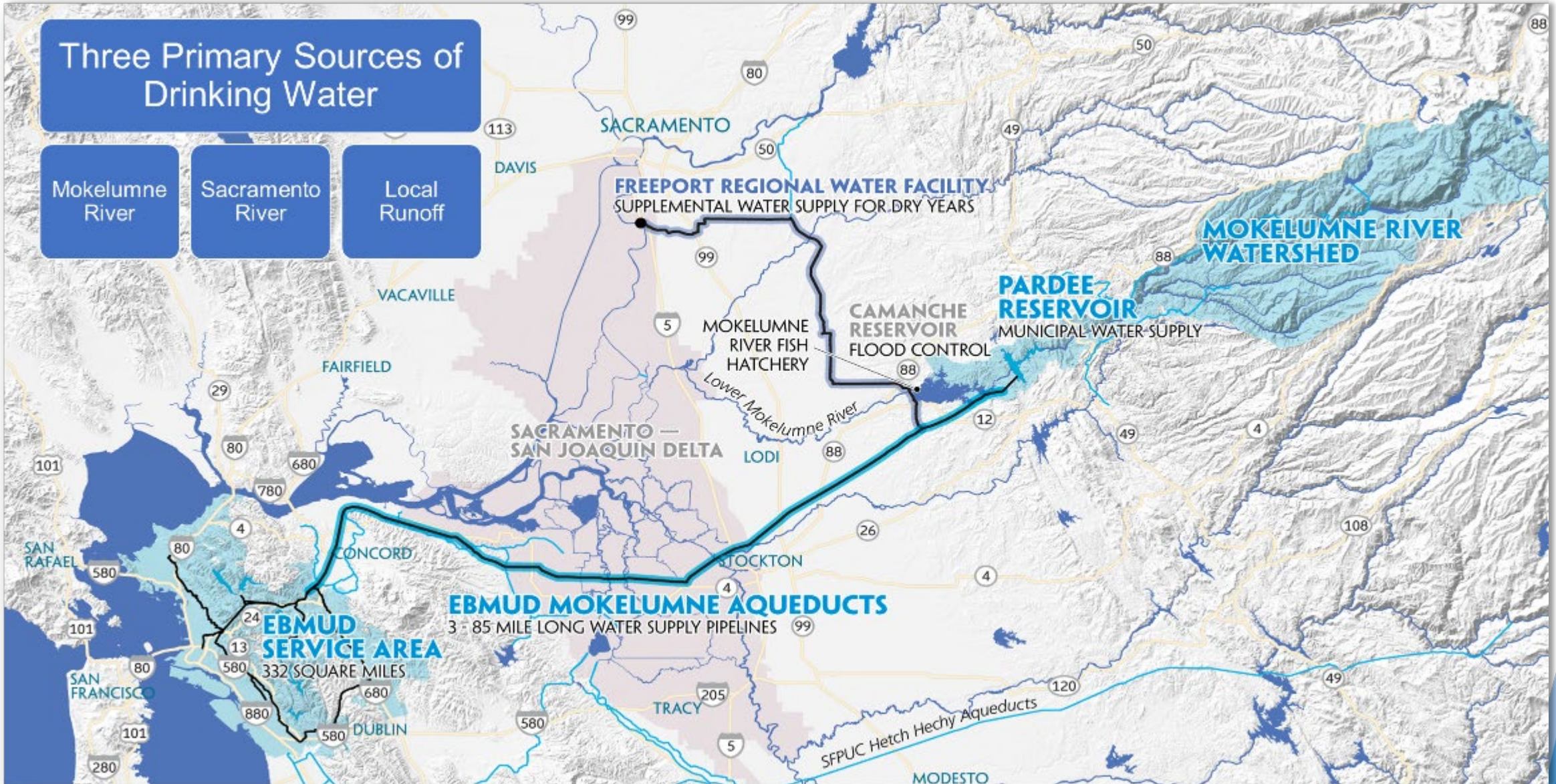


Water: 1.4 Million Customers, Wastewater 740,000 Customers

Where Your Water Comes From



Where Does Your Water Come From?



Staying Ready - Emergency Preparedness

Readiness and Emergency Response

- **Hydrant & System Maintenance** - Approximately 31,000 hydrants systemwide. Regular hydrant testing, flow evaluations, and coordination with local fire departments maintain pressure reliability. Standardized hydrant fittings ensure mutual aid readiness.
- **Maintenance** - regular maintenance of pumps and generators to ensure readiness of water system
- **Building code** – exterior of facilities materials comply with fire code to reduce impact from wildfires
- **Mutual Assistance** - EBMUD is part of California's emergency water utility mutual assistance network and supports other utilities—like in Paradise, and most recently, Los Angeles.



What Can You Do? Be Prepared

- Store at least two gallons of water per person per day
- Plan for 3–7 days of water for each person and pet
- Keep bottled water, sealed containers, or emergency water kits
- Know where your water shutoff valve is and how to use it
- Sign up for local alerts and emergency notifications

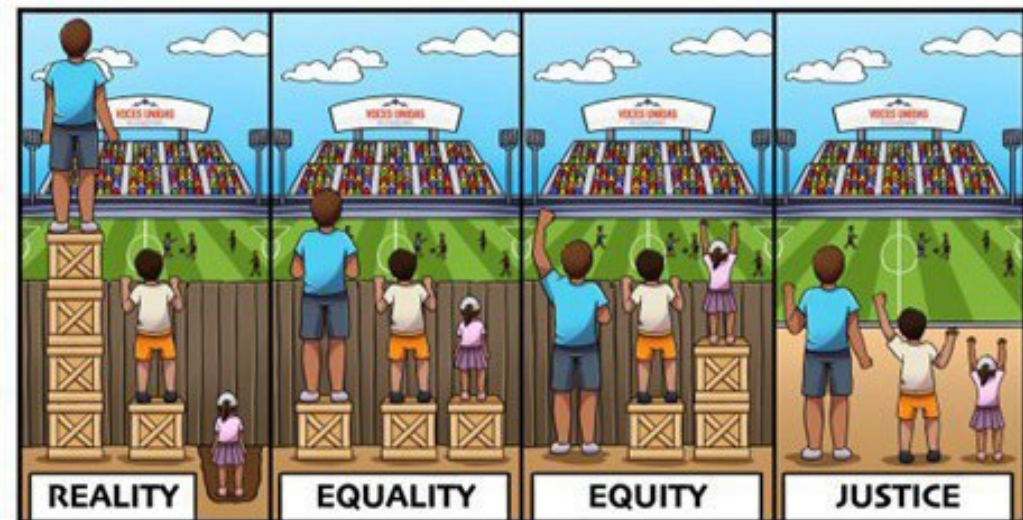


Contract Equity Program (CEP)



Why a CE Program

- To reflect the diversity of our service areas and impact areas in the firms we contract with in response to the District Diversity Equity and Inclusion Strategic Plan



Key Elements of Contract Equity Program

- **Outreach and Engagement**
 - **Quarterly Matchmaking and Business Expo Events**
 - Supplier Diversity Expo & Business Matchmaking Fair
 - Local Business Partners (local chambers and business organizations)
 - **Vendor Readiness and Technical Assistance**
 - Construction Resource Center (Richmond)
 - Alameda County Public Works Agency
 - Construction Contractors Academy (Hayward)



Contract Equity Outreach events

Results

Awarded approximately 550 prime and subcontract contracts totaling over \$380 million

- 311 contracts went to White Men (56%)
- 42 contracts went to White Women (8%)
- 132 contracts went to Ethnic Minorities (24%)
- 63 contracts went to Publicly Held Corporations, Foreign, Unclassified, Government (12%)

The Equalizer

October 2022

The Equalizer

Good to know...

Be WaterSmart

EBMUD offers rebates and services to help businesses save water, lower costs, and optimize landscape maintenance:

- Rebates and financing
- Free water surveys
- Commercial irrigation services
- Commercial newsletter
- Water management tools

For more information visit ebmud.com/watersmart



CalOSBA's Entrepreneurship & Economic Mobility Task Force

The California Office of the Small Business Advocate (CalOSBA)'s 2022 Entrepreneurship & Economic Mobility Task Force (Task Force) goal is to propel inclusive entrepreneurship and to ensure that all California small businesses have access to the resources they need to grow and scale. "This Task Force will focus on addressing current challenges that include workforce and capital access constraints to support a continued sustainable recovery from the COVID-19 crisis as well as look forward to opportunities for innovation and entrepreneurship on a broad scale," said Tara Lynn Gray, Director of CalOSBA.

The activities and deliverables of the 2022 Task Force will focus on three main subject areas:

- Democratizing Access to Capital
- Diversifying the Innovation Economy
- Driving Economic Mobility through Entrepreneurship

The 2022 Task Force builds on the work completed by the 2019 Entrepreneurship Task Force.

About CalOSBA

The Office of the Small Business Advocate (CalOSBA) helps support economic growth and innovation by working to ensure that California's small businesses and entrepreneurs have the information, tools and resources they need to plan, launch, manage and grow their businesses successfully and be resilient. The CalOSBA serves to elevate their voices in state government and to advocate on their behalf to help ensure all aspiring and current small business owners and entrepreneurs are provided with the opportunity to access capital, access markets, and connect to the networks and resources they need to succeed. For more information visit calosba.ca.gov



Contract Equity Office
P. O. Box 24055
Oakland, CA 94623-1055

p: 510-287-0114
f: 510-287-2158

online: www.ebmud.com
email: contract.equity@ebmud.com

EAST BAY MUNICIPAL UTILITY DISTRICT



CONTRACT EQUITY PROGRAM AND EQUAL EMPLOYMENT OPPORTUNITY GUIDELINES

MARCH 2019

Contract Equity Office • P. O. Box 24055, Oakland, CA 94623-1055 • 510-287-0114
cntrteq@ebmud.com • www.ebmud.com



Investing in Education

Youth Education

- 5th grade water field trips reaching ~75% Title I Schools
- Science, Technology, Engineering, Art and Math (STEAM) Nights/Science Fairs
- STEAM Kits and in-classroom filtration presentations



Staff demonstrates filtration at the Richmond Family STEAM Fair with Scientific Adventures for Girls



(Top) 5th graders visit Sobrante Water Treatment Plant (Bottom) ZunZun musical water assembly

STEM/STEAM Events



Elementary & 5th Grade Classes

Michelle Obama Elementary,
Richmond

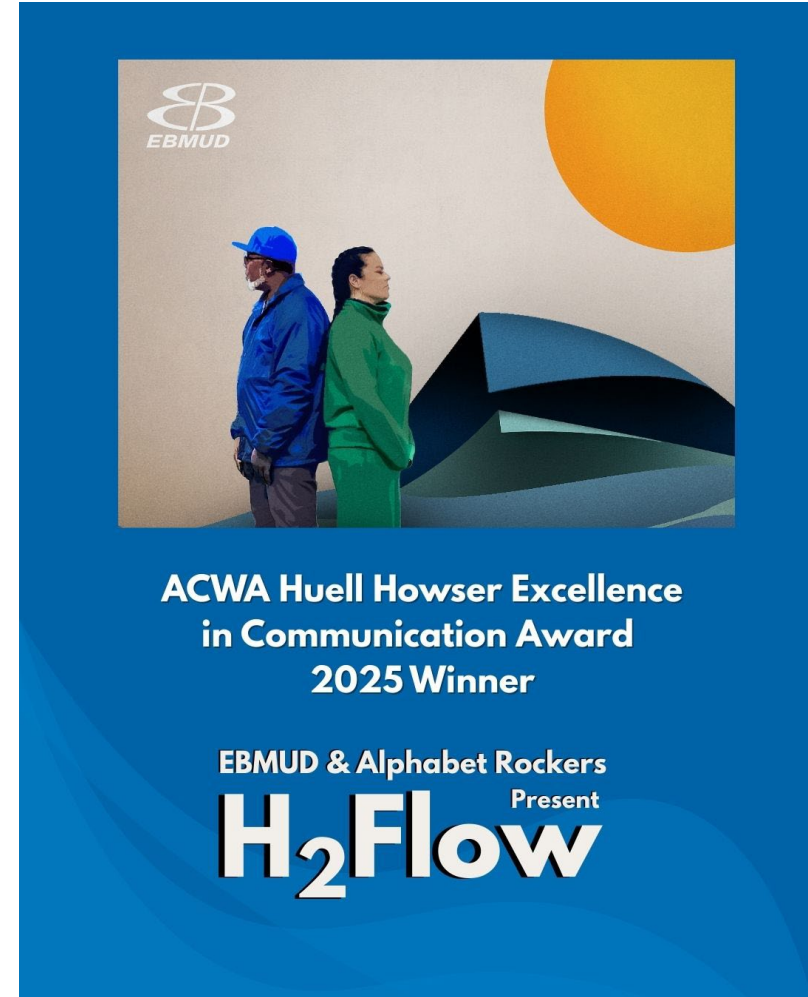
Lupine Hills Elementary- Hercules

Montalvin Elementary-San Pablo

Photo: Nystrom Elementary-Richmond

2025 Education Program by the Numbers

- 3,400+ K-12 students participated in field trips
- 30+ school assemblies, classroom presentations, and STEAM fairs
- 182,000+ H₂Flow music video views, recognized with two industry awards
- 30 new Community Water Ambassadors
- 85+ wastewater and facility tours and watershed walks
- 2,400+ customers reached through Water Wednesday Webinars



H₂Flow's Association of California Water Agencies Huell Howser award announcement

Customer Assistance Program (CAP)

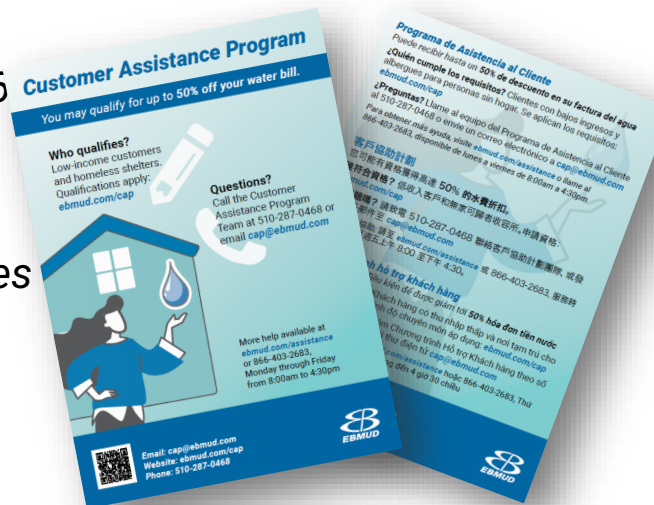


Customer Assistance Program (CAP)

- **NOTE: These are 2024 income levels. They have increased since then.**
- Established in 1987 – one of the first programs in the state
- Applicants must be a customer and have a water meter
- Enrollment is valid for two years, must be recertified
- Provides benefits to residential dwellings and homeless shelters:
 - 50% off water service and flow charges (max of 1,05 gallons/month per person
 - 35% off wastewater service and flow charges
 - Additional 35% off for cities' sewer collection charges (Oakland, Emeryville and Berkeley)
- Program funded through non-rate revenue
- Current enrollment: **11,400** (as of 03/2026)

Household Size	2024 EBMUD CAP Income Eligibility*	2024 Federal Poverty Guidelines (200%)
1	\$62,300	\$30,120
2	\$62,300	\$40,880
3	\$70,100	\$51,640
4**	\$77,850	\$62,400

*EBMUD uses CA Dept of Housing and Community Development's State Income Limits (Very Low Income) to measure eligibility to be more aligned with local needs.
 **add \$6,250 for each additional household member



ebmud.com/CAP

Stay Connected with EBMUD

Contact: Community Affairs

Construction-north@ebmud.com

510-287-7208

Sign up for [EBMUD Alerts](https://ebmud.com/customers/alerts) at ebmud.com/customers/alerts for updates on emergency outages, construction activities, webinars, and community meetings



Youtube - (OfficialEBMUD)

Instagram - (@ebmud_water)

Facebook - (/EBMUD)

Questions?

